

# Medium Voltage Fuses for Capacitors

Back-up

North American Style



## Description

The new range of SIBA HV fuse-links HHC provides maximum protection in capacitor applications. The fuses are designed to be mounted directly to the capacitor bushings in individual fusing applications, indoor and outdoor. The fuses are available in a variety of different thread sizes such as 1/2 inch, M12, M16.

An additional L-shape range for bus-mounting also provides a 50 N striker for both visualizing the fuse operation and triggering the SIBA Micro-Switch-Fitting 3100210. This Micro-Switch-Fitting produces an electrical signal for each operated fuse.

## Application

### Rated voltage

In contrast to a standard HV fuse-link, all HHC types already respect the higher voltage level necessary for a proper capacitor protection. Therefore, the rated voltage of a HHC fuse-link can be the same as the application voltage, also the case of floating-wye connections.

For example an 8.3 kV fuse can be placed in a 7.96 kV floating-wye system.

### Rated current

To respect the influences and tolerances mentioned in IEEE 18-1992, like:

- Tolerance of capacitor rating  $S = 1,15xSr$
- Tolerance of the application voltage  $U = 1.1xUr$
- Harmonic influences
- Inrush currents

The rated current of the selected SIBA HHC fuse-link shall be min. 2 times the operation current of the application.

## Benefits

The HHC type also combines all the benefits of the well known SIBA characteristics:

- ▷ Maximum current-limitation with low let-through currents
- ▷ High breaking capacity of 63 kA sym.
- ▷ Low minimum breaking current
- ▷ Low power-dissipation
- ▷ Heat resistant insulation, non-organic ceramic body
  - No melting of the body in the case of overload-failures with long pre-arcing times
  - No reignition after operation, due to the non-organic material



**Medium Voltage Fuses for Capacitors**  
North American Style

**Selection Guide Fuses**

Connection	Rated Voltage AC [kV]	Diameter [mm]	Class	Part No.	Selector Guide [Page]	Techn. Data [Page]
1/2" UNC	4.8	63.5	Back-up	30 349 21	HHC 3	HHC 9
1/2" UNC	4.8	76	Back-up	30 350 21	HHC 3	HHC 9
1/2" UNC	4.8	76	Back-up	30 351 21	HHC 3	HHC 9
1/2" UNC	7.2	63.5	Back-up	30 352 21	HHC 4	HHC 9
1/2" UNC	7.2	76	Back-up	30 353 21	HHC 4	HHC 9
1/2" UNC	15.5	63.5	Back-up	30 354 21	HHC 5	HHC 10
M16	4.8	63.5	Back-up	30 356 21	HHC 6	HHC 10
M16	4.8	76	Back-up	30 357 21	HHC 6	HHC 10
M16	4.8	76	Back-up	30 358 21	HHC 6	HHC 10
M16	7.2	63.5	Back-up	30 359 21	HHC 7	HHC 11
M16	7.2	76	Back-up	30 360 21	HHC 7	HHC 11
M16	15.5	63.5	Back-up	30 361 21	HHC 8	HHC 11
1/2" UNC-Bus mounting	5.5	63.5	Back-up	30 384 26	HHC 14	HHC 26
1/2" UNC-Bus mounting	8.3	63.5	Back-up	30 387 26	HHC 15	HHC 26
1/2" UNC-Bus mounting	8.3	63.5	Back-up	30 388 26	HHC 15	HHC 26
1/2" UNC-Bus mounting	15.5	63.5	Back-up	30 386 26	HHC 16	HHC 27
1/2" UNC-Bus mounting	15.5	63.5	Back-up	30 389 26	HHC 16	HHC 27
1/2" UNC-Bus mounting	23	63.5	Back-up	30 390 26	HHC 17	HHC 27
M16-Bus mounting	5.5	63.5	Back-up	30 404 26	HHC 18	HHC 28
M16-Bus mounting	8.3	63.5	Back-up	30 405 26	HHC 19	HHC 28
M16-Bus mounting	8.3	63.5	Back-up	30 406 26	HHC 19	HHC 28
M16-Bus mounting	15.5	63.5	Back-up	30 407 26	HHC 20	HHC 29
M16-Bus mounting	15.5	63.5	Back-up	30 408 26	HHC 20	HHC 29
M16-Bus mounting	23	63.5	Back-up	30 409 26	HHC 21	HHC 29
Bus mounting	5.5	63.5	Back-up	30 410 26	HHC 22	HHC 30
Bus mounting	8.3	63.5	Back-up	30 411 26	HHC 23	HHC 30
Bus mounting	8.3	63.5	Back-up	30 412 26	HHC 23	HHC 30
Bus mounting	15.5	63.5	Back-up	30 414 26	HHC 24	HHC 31
Bus mounting	15.5	63.5	Back-up	30 415 26	HHC 24	HHC 31
Bus mounting	23	63.5	Back-up	30 416 26	HHC 25	HHC 31

**Selection Guide Micro Switch**

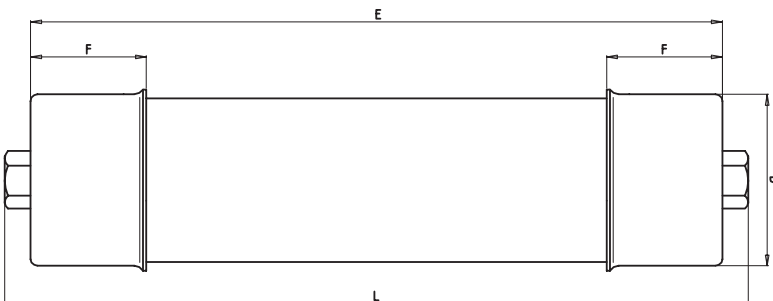
Article	Length [mm]	Part No.	Selector Guide [Page]
Micro switch	660	31 002 10	HHC 34



**Medium Voltage Fuses for Capacitors**  
North American Style

Rated Voltage <b>AC 4.8 kV</b>	Class <b>Back-up</b>	Thread <b>1/2" UNC</b>	Standard <b>IEC 60 282-1 · IEC 60 549</b>
-----------------------------------	-------------------------	---------------------------	--

Rated current [A]	Part No.	D = Diameter		Rated Breaking Current [kA]	Weight [kg/1]	Pack
		[inch]	[mm]			
6.3	30 349 21.6.3	2.5	63.5	63	1.8	1
10	30 349 21.10	2.5	63.5	63	1.8	1
16	30 349 21.16	2.5	63.5	63	1.8	1
20	30 349 21.20	2.5	63.5	63	1.8	1
25	30 349 21.25	2.5	63.5	63	1.8	1
31.5	30 349 2131.5	2.5	63.5	63	1.8	1
40	30 349 21.40	2.5	63.5	63	1.8	1
50	30 349 21.50	2.5	63.5	63	1.8	1
63	30 349 21.63	2.5	63.5	63	1.8	1
80	30 349 21.80	2.5	63.5	63	1.8	1
100	30 349 21.100	2.5	63.5	63	1.8	1
125	30 350 21.125	2.99	76	63	2.5	1
160	30 350 21.160	2.99	76	63	2.5	1
200	30 351 21.200	2.99	76	63	3.6	1
250	30 351 21.250	2.99	76	63	3.6	1



**30 349 21/30 350 21**

E	10.00" (254 mm)
L	10.75" (273 mm)
F	1.67" (42,5 mm)

**30 351 21**

E	14.13" (359 mm)
L	14.88" (378 mm)
F	1.67" (42,5 mm)



**Medium Voltage Fuses for Capacitors**  
North American Style

Rated Voltage  
**AC 7.2 kV**

Class  
**Back-up**

Thread  
**1/2" UNC**

Standard  
**IEC 60 282-1 · IEC 60 549**

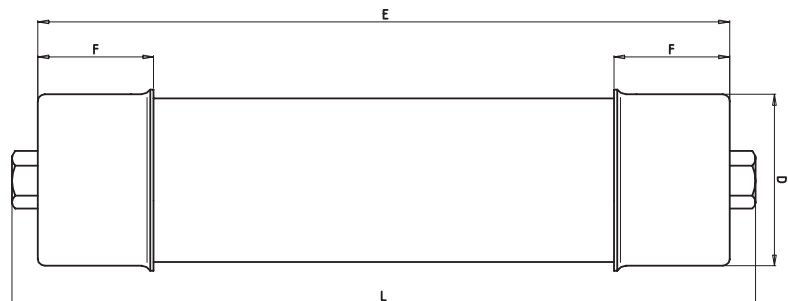
Rated Current [A]	Part No.	D = Diameter		Rated Breaking Current [kA]	Weight [kg/1]	Pack	
		[inch]	[mm]				
6.3	30 352 21.6.3	2.5	63.5	63	1.8	1	
10	30 352 21.10	2.5	63.5	63	1.8	1	
16	30 352 21.16	2.5	63.5	63	1.8	1	
20	30 352 21.20	2.5	63.5	63	1.8	1	
25	30 352 21.25	2.5	63.5	63	1.8	1	
31.5	30 352 21.31.5	2.5	63.5	63	1.8	1	
40	30 352 21.40	2.5	63.5	63	1.8	1	
50	30 352 21.50	2.5	63.5	63	1.8	1	
63	30 352 21.63	2.5	63.5	63	1.8	1	
80	30 352 21.80	2.5	63.5	63	1.8	1	
100	30 352 21.100	2.5	63.5	63	1.8	1	
125	30 353 21.125	2.99	76	63	3.6	1	
160	30 353 21.160	2.99	76	63	3.6	1	
200	30 353 21.200	2.99	76	63	3.6	1	

**30 352 21**

- E** 10.00" (254 mm)
- L** 10.75" (273 mm)
- F** 1.67" (42,5 mm)

**30 353 21**

- E** 14.13" (359 mm)
- L** 14.88" (378 mm)
- F** 1.67" (42,5 mm)

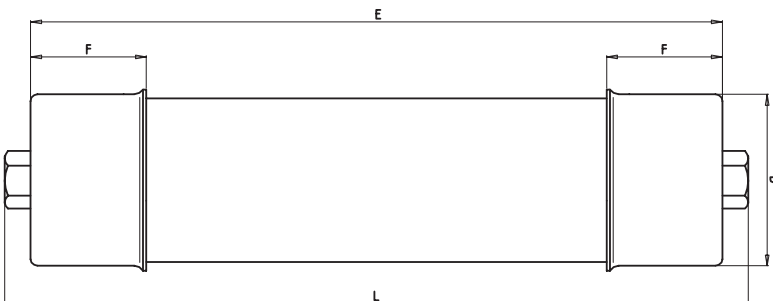




**Medium Voltage Fuses for Capacitors**  
North American Style

Rated Voltage <b>AC 15.5 kV</b>	Class <b>Back-up</b>	Thread <b>1/2" UNC</b>	Standard <b>IEC 60 282-1 · IEC 60 549</b>
------------------------------------	-------------------------	---------------------------	--

Rated Current [A]	Part No.	D = Diameter		Rated Breaking Current [kA]	Weight [kg/1]	Pack
		[inch]	[mm]			
6.3	30 354 21.6.3	2.5	63.5	63	2.5	1
10	30 354 21.10	2.5	63.5	63	2.5	1
16	30 354 21.16	2.5	63.5	63	2.5	1
20	30 354 21.20	2.5	63.5	63	2.5	1
25	30 354 21.25	2.5	63.5	63	2.5	1
31.5	30 354 21.31.5	2.5	63.5	63	2.5	1
40	30 354 21.40	2.5	63.5	63	2.5	1
50	30 354 21.50	2.5	63.5	63	2.5	1
63	30 354 21.63	2.5	63.5	63	2.5	1
80	30 354 21.80	2.5	63.5	63	2.5	1
100	30 354 21.100	2.5	63.5	63	2.5	1



<b>E</b>	<b>14.13"</b> (359 mm)
<b>L</b>	<b>14.88"</b> (378 mm)
<b>F</b>	<b>1.67"</b> (42,5 mm)



**Medium Voltage Fuses for Capacitors**  
North American Style

Rated Voltage  
**AC 4.8 kV**

Class  
**Back-up**

Thread  
**M16**

Standard  
**IEC 60 282-1 · IEC 60 549**

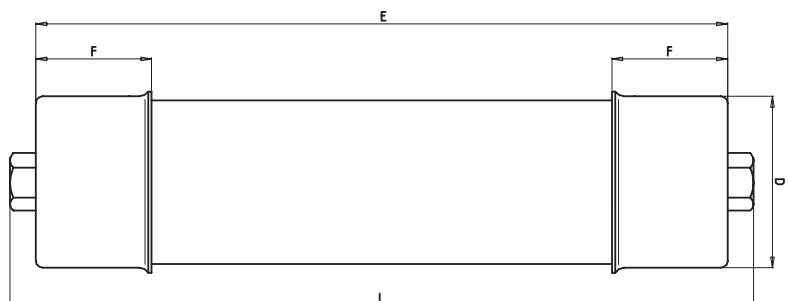
Rated Current [A]	Part No.	D = Diameter		Rated Breaking Current [kA]	Weight [kg/1]	Pack
		[inch]	[mm]			
6.3	30 356 21.6.3	2.5	63.5	63	1.8	1
10	30 356 21.10	2.5	63.5	63	1.8	1
16	30 356 21.16	2.5	63.5	63	1.8	1
20	30 356 21.20	2.5	63.5	63	1.8	1
25	30 356 21.25	2.5	63.5	63	1.8	1
31.5	30 356 21.31.5	2.5	63.5	63	1.8	1
40	30 356 21.40	2.5	63.5	63	1.8	1
50	30 356 21.50	2.5	63.5	63	1.8	1
63	30 356 21.63	2.5	63.5	63	1.8	1
80	30 356 21.80	2.5	63.5	63	1.8	1
100	30 356 21.100	2.5	63.5	63	1.8	1
125	30 357 21.125	2.99	76	63	2.5	1
160	30 357 21.160	2.99	76	63	2.5	1
200	30 358 21.200	2.99	76	63	3.6	1
250	30 358 21.250	2.99	76	63	3.6	1

**30 356 21/30 357 21**

- E** 10.00" (254 mm)
- L** 10.75" (273 mm)
- F** 1.67" (42,5 mm)

**30 358 21**

- E** 14.13" (359 mm)
- L** 14.88" (378 mm)
- F** 1.67" (42,5 mm)

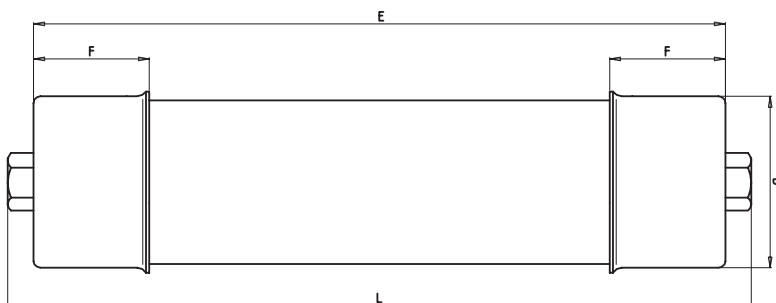




**Medium Voltage Fuses for Capacitors**  
North American Style

Rated Voltage **AC 7.2 kV**      Class **Back-up**      Thread **M16**      Standard **IEC 60 282-1 · IEC 60 549**

Rated Current [A]	Part No.	D = Diameter		Rated Breaking Current [kA]	Weight [kg/1]	Pack	
		[inch]	[mm]				
6.3	30 359 21.6.3	2.5	63.5	63	1.8	1	
10	30 359 21.10	2.5	63.5	63	1.8	1	
16	30 359 21.16	2.5	63.5	63	1.8	1	
20	30 359 21.20	2.5	63.5	63	1.8	1	
25	30 359 21.25	2.5	63.5	63	1.8	1	
31.5	30 359 21.31.5	2.5	63.5	63	1.8	1	
40	30 359 21.40	2.5	63.5	63	1.8	1	
50	30 359 21.50	2.5	63.5	63	1.8	1	
63	30 359 21.63	2.5	63.5	63	1.8	1	
80	30 359 21.80	2.5	63.5	63	1.8	1	
100	30 359 21.100	2.5	63.5	63	1.8	1	
125	30 360 21.125	2.99	76	63	2.5	1	
160	30 360 21.160	2.99	76	63	2.5	1	
200	30 360 21.200	2.99	76	63	2.5	1	



<b>30 359 21</b>	
E	10.00" (254 mm)
L	10.75" (273 mm)
F	1.67" (42,5 mm)
<b>30 360 21</b>	
E	14.13" (359 mm)
L	14.88" (378 mm)



**Medium Voltage Fuses for Capacitors**  
North American Style

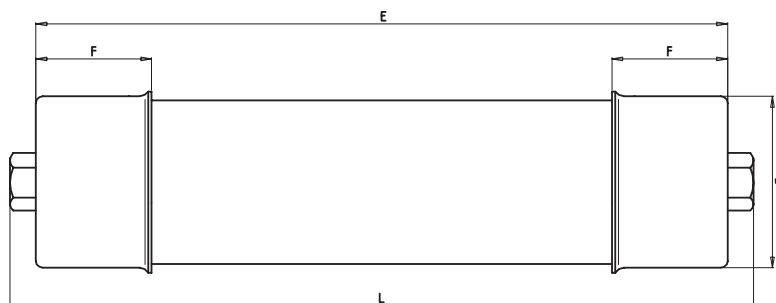
Rated Voltage  
**AC 15.5 kV**

Class  
**Back-up**

Thread  
**M16**

Standard  
**IEC 60 282-1 · IEC 60 549**

Rated Current [A]	Part No.	D = Diameter		Rated Breaking Current [kA]	Weight [kg/1]	Pack
		[inch]	[mm]			
6.3	30 361 21.6.3	2.5	63.5	63	2.5	1
10	30 361 21.10	2.5	63.5	63	2.5	1
16	30 361 21.16	2.5	63.5	63	2.5	1
20	30 361 21.20	2.5	63.5	63	2.5	1
25	30 361 21.25	2.5	63.5	63	2.5	1
31.5	30 361 21.31.5	2.5	63.5	63	2.5	1
40	30 361 21.40	2.5	63.5	63	2.5	1
50	30 361 21.50	2.5	63.5	63	2.5	1
63	30 361 21.63	2.5	63.5	63	2.5	1
80	30 361 21.80	2.5	63.5	63	2.5	1
100	30 361 21.100	2.5	63.5	63	2.5	1



**E** 14.13" (359 mm)  
**L** 14.88" (378 mm)  
**F** 1.67" (42,5 mm)



Rated Voltage **AC 4.8 kV**      Class **Back-up**      Thread **1/2" UNC**

Rated Current [A]	Part No.	Rated Breaking Current [kA]	Pre-arcing I <sup>2</sup> t-value [A <sup>2</sup> s]	Total I <sup>2</sup> t-value [A <sup>2</sup> s]	Power Loss [W]
6.3	30 349 21.6.3	63	45	330	11
10	30 349 21.10	63	75	500	19
16	30 349 21.16	63	250	1 800	13
20	30 349 21.20	63	640	4 300	14
25	30 349 21.25	63	1 050	6 700	16
31.5	30 349 21.31.5	63	1 700	10 800	20
40	30 349 21.40	63	2 900	17 100	26
50	30 349 21.50	63	5 700	29 700	30
63	30 349 21.63	63	10 700	59 400	37
80	30 349 21.80	63	21 000	126 000	42
100	30 349 21.100	63	33 000	189 000	55
125	30 350 21.125	63	47 000	351 000	78
160	30 350 21.160	63	90 000	513 000	93
200	30 351 21.200	63	230 000	571 000	123
250	30 351 21.250	63	371 000	892 000	161

Rated Voltage **AC 7.2 kV**      Class **Back-up**      Thread **1/2" UNC**

Rated Current [A]	Part No.	Rated Breaking Current [kA]	Pre-arcing I <sup>2</sup> t-value [A <sup>2</sup> s]	Total I <sup>2</sup> t-value [A <sup>2</sup> s]	Power Loss [W]
6.3	30 352 216.3	63	45	330	16
10	30 352 21.10	63	75	500	22
16	30 352 21.16	63	250	1,800	19
20	30 352 21.20	63	640	4,300	21
25	30 352 21.25	63	1 050	6,700	24
31.5	30 352 21.31.5	63	1 700	10,800	30
40	30 352 21.40	63	2 900	17,100	39
50	30 352 21.50	63	5 700	29,700	45
63	30 352 21.63	63	10 700	59 400	55
80	30 352 21.80	63	21 000	126 000	63
100	30 352 21.100	63	33 000	189 000	82
125	30 353 21.125	63	47 000	351 000	117
160	30 353 21.160	63	90 000	513 000	139
200	30 353 21.200	63	230 000	571 000	154

**Time-current characteristics and cut-off current diagram please refer to pages HHC 12 and HHC 13**

Rated Voltage  
**AC 15.5 kV**

 Class  
**Back-up**

 Thread  
**1/2" UNC**

Rated Current [A]	Part No.	Rated Breaking Current [kA]	Pre-arcing I <sup>2</sup> t-value [A <sup>2</sup> s]	Total I <sup>2</sup> t-value [A <sup>2</sup> s]	Power Loss [W]
6.3	30 354 21.6.3	63	45	330	21
10	30 354 21.10	63	75	500	38
16	30 354 21.16	63	250	1 800	37
20	30 354 21.20	63	640	4 300	40
25	30 354 21.25	63	1 050	6 700	56
31.5	30 354 21.31.5	63	1 700	10 800	65
40	30 354 21.40	63	2 900	17 100	84
50	30 354 21.50	63	5 700	29 700	101
63	30 354 21.63	63	10 700	59 400	106
80	30 354 21.80	63	21 000	126 000	137
100	30 354 21.100	63	33 000	189 000	182

 Rated Voltage  
**AC 4.8 kV**

 Class  
**Back-up**

 Thread  
**M16**

Rated Current [A]	Part No.	Rated Breaking Current [kA]	Pre-arcing I <sup>2</sup> t-value [A <sup>2</sup> s]	Total I <sup>2</sup> t-value [A <sup>2</sup> s]	Power Loss [W]
6.3	30 356 21.6.3	63	45	330	11
10	30 356 21.10	63	75	500	19
16	30 356 21.16	63	250	1 800	13
20	30 356 21.20	63	640	4 300	14
25	30 356 21.25	63	1 050	6 700	16
31.5	30 356 21.31.5	63	1 700	10 800	20
40	30 356 21.40	63	2 900	17 100	26
50	30 356 21.50	63	5 700	29 700	30
63	30 356 21.63	63	10 700	59 400	37
80	30 356 21.80	63	21 000	126 000	42
100	30 356 21.100	63	33 000	189 000	55
125	30 357 21.125	63	47 000	351 000	78
160	30 357 21.160	63	90 000	513 000	93
200	30 358 21.200	63	230 000	571 000	123
250	30 358 21.250	63	371 000	892 000	161

**Time-current characteristics and cut-off current diagram  
 please refer to pages HHC 12 and HHC 13**

Rated Voltage **AC 7.2 kV**      Class **Back-up**      Thread **M16**

Rated Current [A]	Part No.	Rated Breaking Current [kA]	Pre-arcing I <sup>2</sup> t-value [A <sup>2</sup> s]	Total I <sup>2</sup> t-value [A <sup>2</sup> s]	Power Loss [W]
6.3	30 359 21.6.3	63	45	330	16
10	30 359 21.10	63	75	500	22
16	30 359 21.16	63	250	1 800	19
20	30 359 21.20	63	640	4 300	21
25	30 359 21.25	63	1 050	6 700	24
31.5	30 359 21.31.5	63	1 700	10 800	30
40	30 359 21.40	63	2 900	17 100	39
50	30 359 21.50	63	5 700	29 700	45
63	30 359 21.63	63	10 700	59 400	55
80	30 359 21.80	63	21 000	126 000	63
100	30 359 21.100	63	33 000	189 000	82
125	30 360 21.125	63	47 000	351 000	117
160	30 360 21.160	63	90 000	513 000	139
200	30 360 21.200	63	230 000	571 000	154

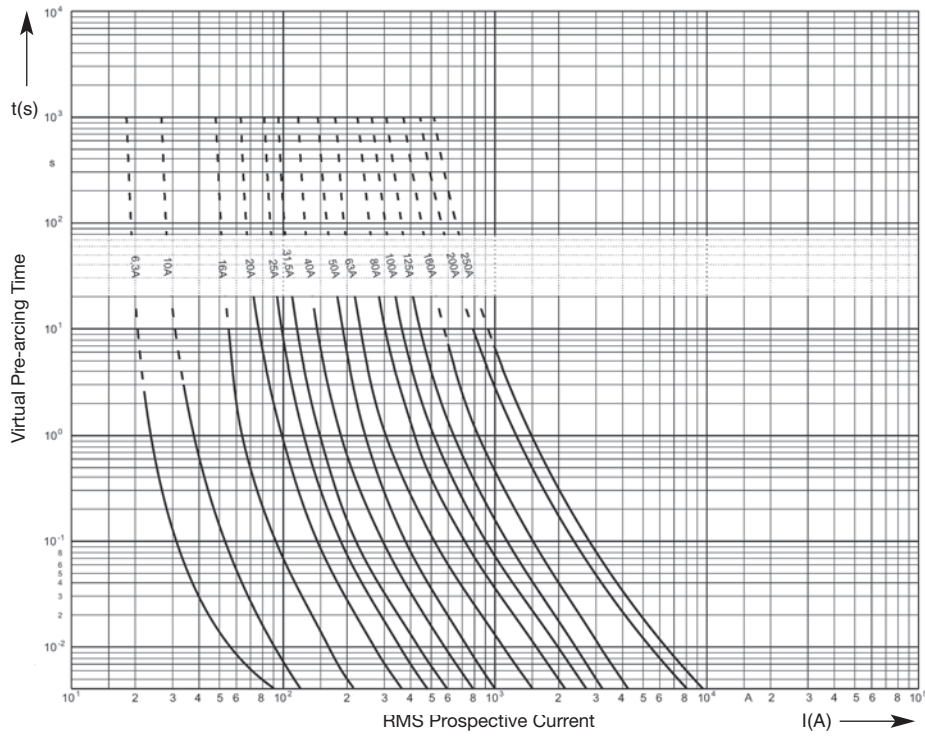
Rated Voltage **AC 15.5 kV**      Class **Back-up**      Thread **M16**

Rated Current [A]	Part No.	Rated Breaking Current [kA]	Pre-arcing I <sup>2</sup> t-value [A <sup>2</sup> s]	Total I <sup>2</sup> t-value [A <sup>2</sup> s]	Power Loss [W]
6.3	30 361 21.6.3	63	45	330	21
10	30 361 21.10	63	75	500	38
16	30 361 21.16	63	250	1 800	37
20	30 361 21.20	63	640	4 300	40
25	30 361 21.25	63	1 050	6 700	56
31.5	30 361 21.31.5	63	1 700	10 800	65
40	30 361 21.40	63	2 900	17 100	84
50	30 361 21.50	63	5 700	29 700	101
63	30 361 21.63	63	10 700	59 400	106
80	30 361 21.80	63	21 000	126 000	137
100	30 361 21.100	63	33 000	189 000	182

**Time-current characteristics and cut-off current diagram please refer to pages HHC 12 and HHC 13**

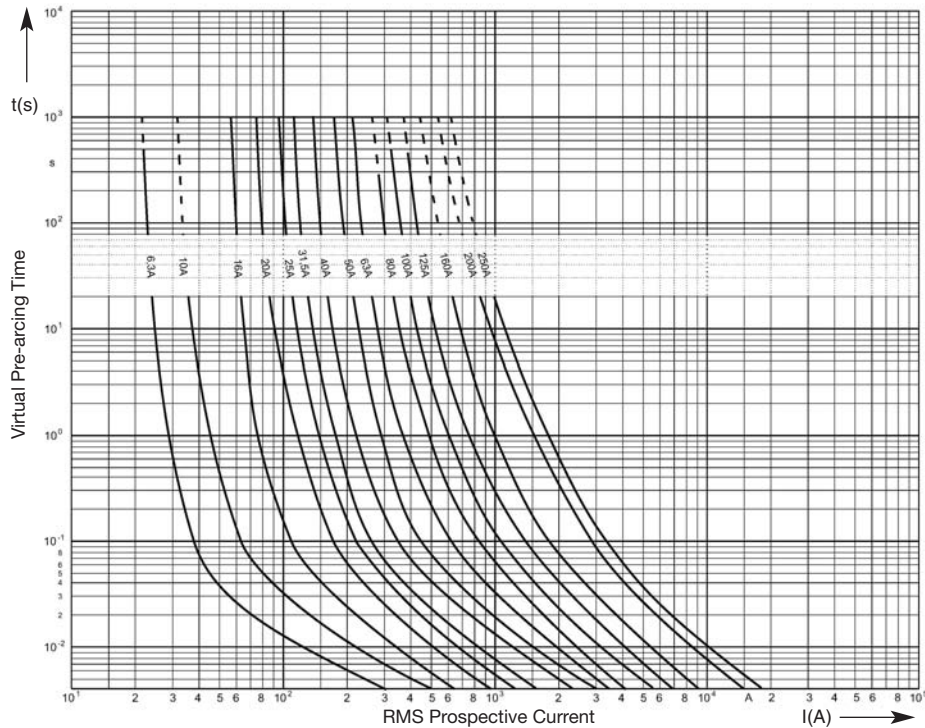
**Time-Current Characteristics  
Minimum Melting**

**Back-up**



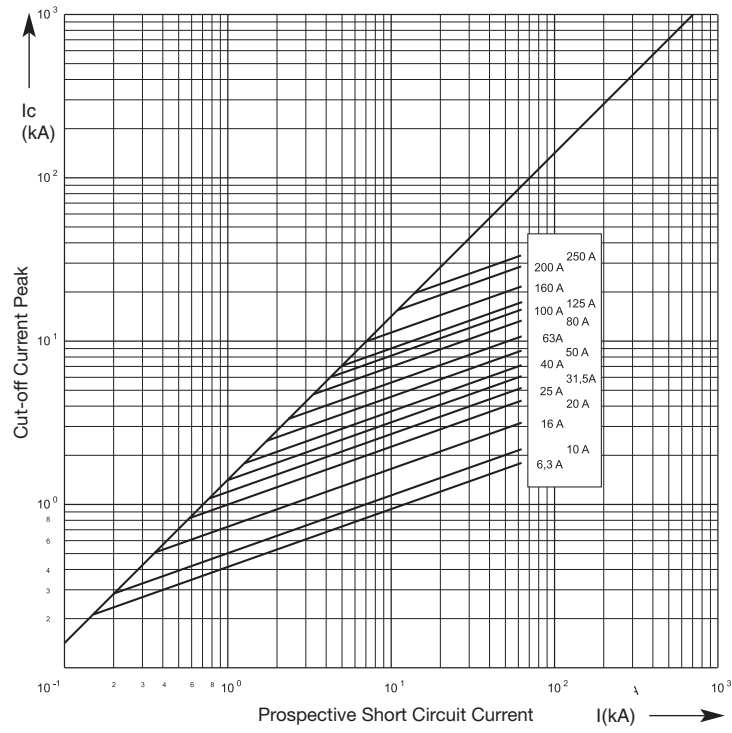
**Time-Current Characteristics  
Total Clearing**

**Back-up**



Cut-Off Current Diagram

Back-up





**Medium Voltage Fuses for Capacitors**  
North American Style

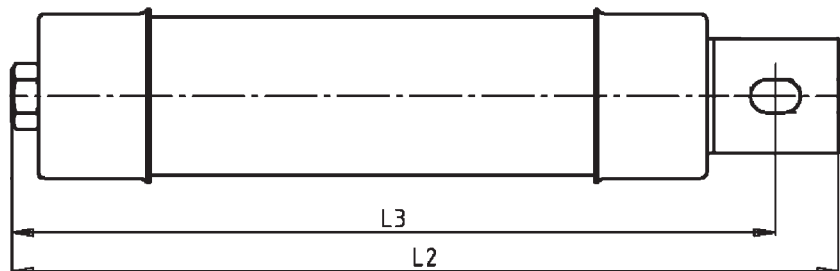
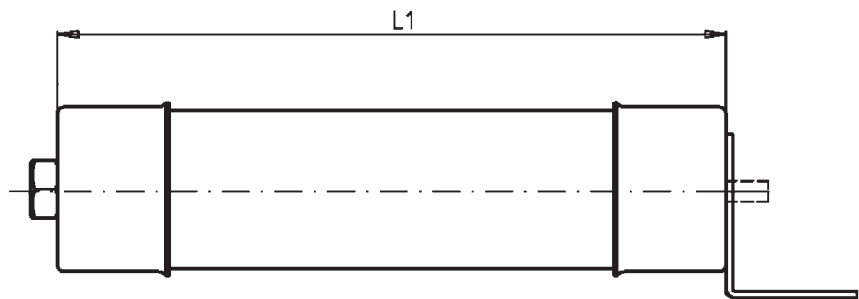
Rated Voltage  
**AC 5.5 kV**

Class  
**Back-up**

Thread  
**1/2" UNC**

Standard  
**IEC 60 282-1**

Rated Current [A]	Part No.	D = Diameter		Rated Breaking Current [kA]	Weight [kg/1]	Pack
		[inch]	[mm]			
6.3	30 384 26.6.3	2.5	63.5	63	1.8	1
10	30 384 26.10	2.5	63.5	63	1.8	1
16	30 384 26.16	2.5	63.5	63	1.8	1
20	30 384 26.20	2.5	63.5	63	1.8	1
25	30 384 26.25	2.5	63.5	63	1.8	1
31.5	30 384 26.31.5	2.5	63.5	63	1.8	1
40	30 384 26.40	2.5	63.5	63	1.8	1
50	30 384 26.50	2.5	63.5	63	1.8	1
63	30 384 26.63	2.5	63.5	63	1.8	1
80	30 384 26.80	2.5	63.5	63	1.8	1
100	30 384 26.100	2.5	63.5	63	1.8	1
125	30 384 26.125	2.5	63.5	63	2.5	1



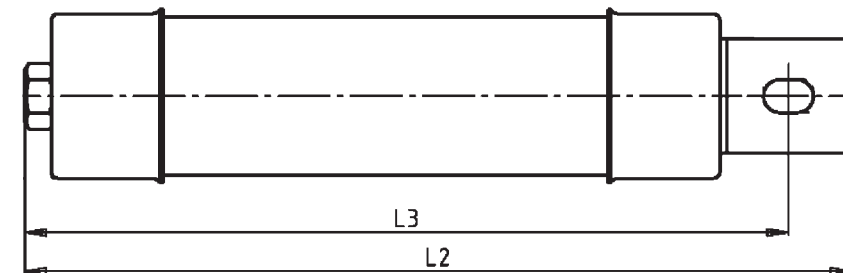
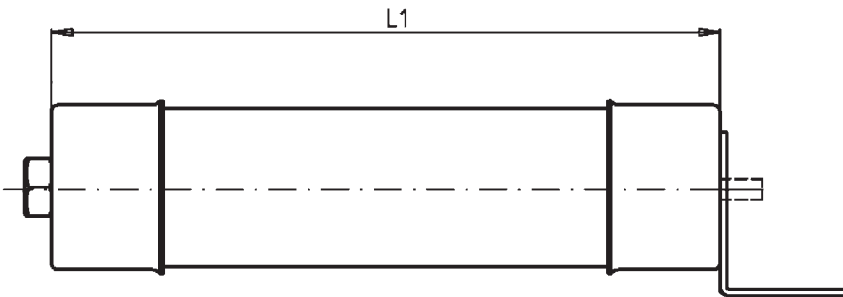
- L1 10.0" (254 mm)
- L2 12.4" (315 mm)
- L3 11.42" (290 mm)



**Medium Voltage Fuses for Capacitors**  
North American Style

Rated Voltage **AC 8.3 kV**      Class **Back-up**      Thread **1/2" UNC**      Standard **IEC 60 282-1**

Rated Current [A]	Part No.	D = Diameter		Rated Breaking Current [kA]	Weight [kg/1]	Pack	
		[inch]	[mm]				
6.3	30 387 26.6.3	2.5	63.5	63	2.5	1	
10	30 387 26.10	2.5	63.5	63	2.5	1	
16	30 387 26.16	2.5	63.5	63	2.5	1	
20	30 387 26.20	2.5	63.5	63	2.5	1	
25	30 387 26.25	2.5	63.5	63	2.5	1	
31.5	30 387 26.31.5	2.5	63.5	63	2.5	1	
40	30 387 26.40	2.5	63.5	63	2.5	1	
50	30 388 26.50	2.5	63.5	63	2.5	1	
63	30 388 26.63	2.5	63.5	63	2.5	1	
80	30 388 26.80	2.5	63.5	63	2.5	1	
100	30 388 26.100	2.5	63.5	63	2.5	1	
125	30 388 26.125	2.5	63.5	63	2.5	1	



**30 387 26**

- L1 10.0" (254 mm)
- L2 12.4" (315 mm)
- L3 11.42" (290 mm)

**30 388 26**

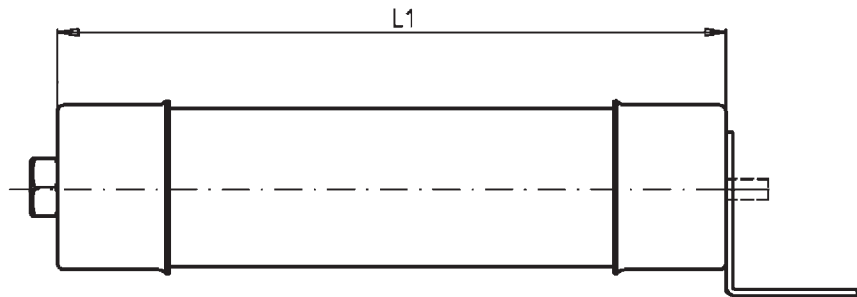
- L1 14.13" (359 mm)
- L2 16.54" (420 mm)
- L3 15.55" (395 mm)



**Medium Voltage Fuses for Capacitors**  
North American Style

Rated Voltage **AC 15.5 kV**      Class **Back-up**      Thread **1/2" UNC**      Standard **IEC 60 282-1**

Rated Current [A]	Part No.	D = Diameter		Rated Breaking Current [kA]	Weight [kg/1]	Pack
		[inch]	[mm]			
6.3	30 386 26.6.3	2.5	63.5	63	1.8	1
10	30 386 26.10	2.5	63.5	63	1.8	1
16	30 386 26.16	2.5	63.5	63	1.8	1
20	30 386 26.20	2.5	63.5	63	1.8	1
25	30 386 26.25	2.5	63.5	63	1.8	1
31.5	30 386 26.31.5	2.5	63.5	63	1.8	1
40	30 386 26.40	2.5	63.5	63	1.8	1
50	30 389 26.50	2.5	63.5	63	1.8	1
63	30 389 26.63	2.5	63.5	63	1.8	1
80	30 389 26.80	2.5	63.5	63	1.8	1

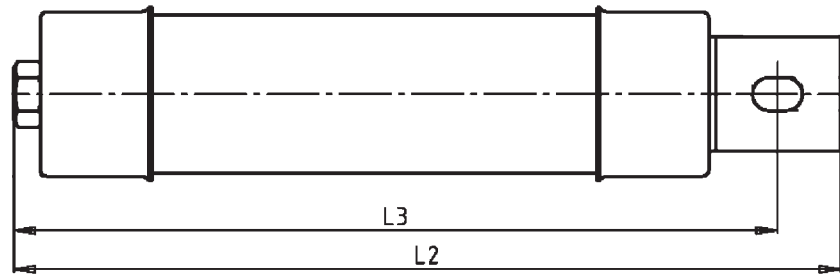


**30 386 26**

- L1 10.0" (254 mm)
- L2 12.4" (315 mm)
- L3 11.42" (290 mm)

**30 389 26**

- L1 14.13" (359 mm)
- L2 16.54" (420 mm)
- L3 15.55" (395 mm)



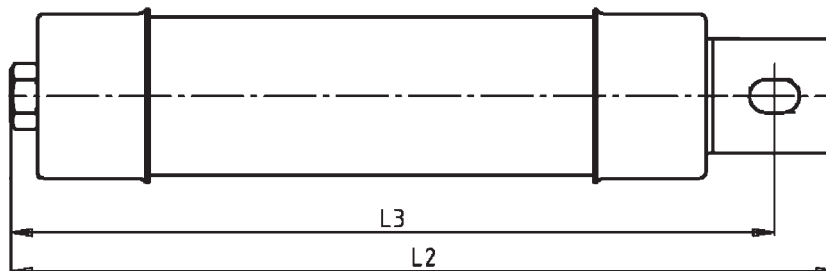
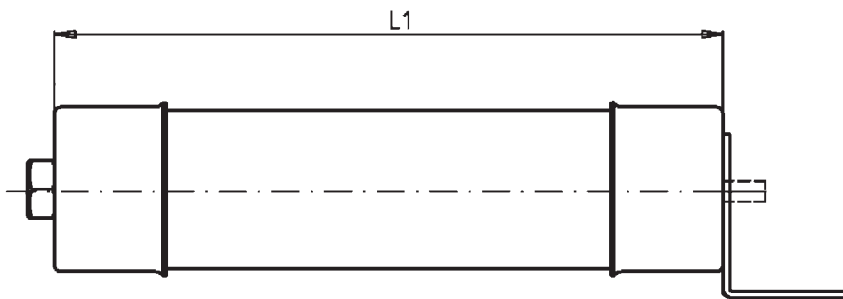




**Medium Voltage Fuses for Capacitors**  
North American Style

Rated Voltage <b>AC 23 kV</b>	Class <b>Back-up</b>	Thread <b>1/2" UNC</b>	Standard <b>IEC 60 282-1</b>
----------------------------------	-------------------------	---------------------------	---------------------------------

Rated Current [A]	Part No.	D = Diameter		Rated Breaking Current [kA]	Weight [kg/1]	Pack
		[inch]	[mm]			
6.3	30 390 26.6.3	2.5	63.5	63	2.5	1
10	30 390 26.10	2.5	63.5	63	2.5	1
16	30 390 26.16	2.5	63.5	63	2.5	1
20	30 390 26.20	2.5	63.5	63	2.5	1
25	30 390 26.25	2.5	63.5	63	2.5	1
31.5	30 390 26.31.5	2.5	63.5	63	2.5	1
40	30 390 26.40	2.5	63.5	63	2.5	1
50	30 390 26.50	2.5	63.5	63	2.5	1



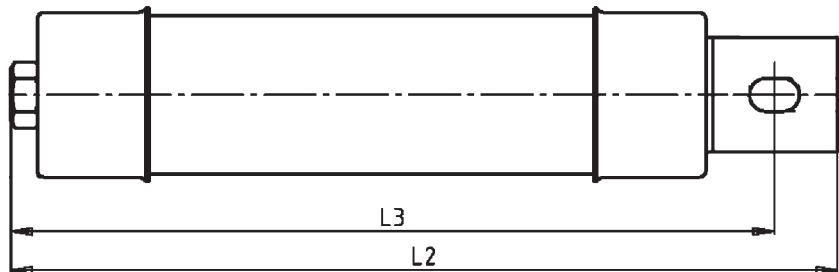
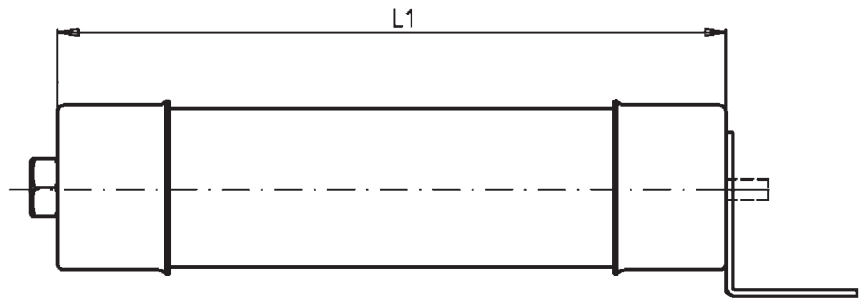
<b>L1</b>	<b>14.13" (359 mm)</b>
<b>L2</b>	<b>16.54" (420 mm)</b>
<b>L3</b>	<b>15.55" (395 mm)</b>



**Medium Voltage Fuses for Capacitors**  
North American Style

<b>Rated Voltage</b> <b>AC 5.5 kV</b>	<b>Class</b> <b>Back-up</b>	<b>Thread</b> <b>M16</b>	<b>Standard</b> <b>IEC 60 282-1</b>
--	--------------------------------	-----------------------------	--

Rated Current [A]	Part No.	D = Diameter		Rated Breaking Current [kA]	Weight [kg/1]	Pack
		[inch]	[mm]			
6.3	30 404 26.6.3	2.5	63.5	63	1.8	1
10	30 404 26.10	2.5	63.5	63	1.8	1
16	30 404 26.16	2.5	63.5	63	1.8	1
20	30 404 26.20	2.5	63.5	63	1.8	1
25	30 404 26.25	2.5	63.5	63	1.8	1
31.5	30 404 26.31.5	2.5	63.5	63	1.8	1
40	30 404 26.40	2.5	63.5	63	1.8	1
50	30 404 26.50	2.5	63.5	63	1.8	1
63	30 404 26.63	2.5	63.5	63	1.8	1
80	30 404 26.80	2.5	63.5	63	1.8	1
100	30 404 26.100	2.5	63.5	63	1.8	1
125	30 404 26.125	2.5	63.5	63	1.8	1



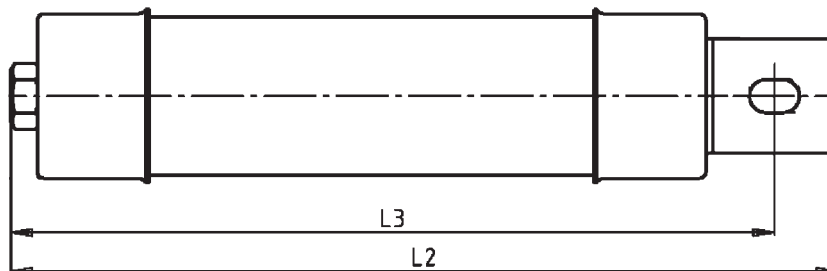
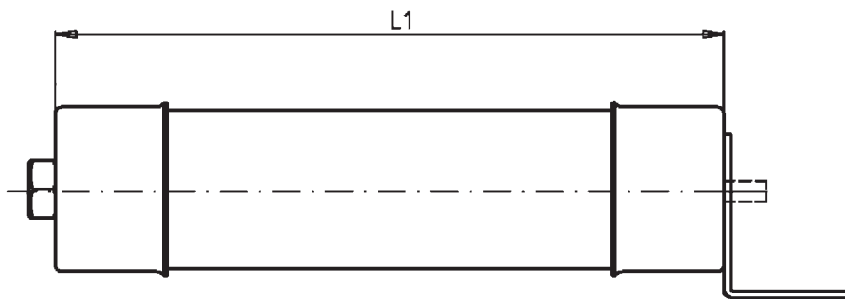
- L1 10.0" (254 mm)
- L2 12.4" (315 mm)
- L3 11.42" (290 mm)



**Medium Voltage Fuses for Capacitors**  
North American Style

Rated Voltage **AC 8.3 kV**      Class **Back-up**      Thread **M16**      Standard **IEC 60 282-1**

Rated Current [A]	Part No.	D = Diameter		Rated Breaking Current [kA]	Weight [kg/1]	Pack	
		[inch]	[mm]				
6.3	30 405 26.6.3	2.5	63.5	63	2.5	1	
10	30 405 26.10	2.5	63.5	63	2.5	1	
16	30 405 26.16	2.5	63.5	63	2.5	1	
20	30 405 26.20	2.5	63.5	63	2.5	1	
25	30 405 26.25	2.5	63.5	63	2.5	1	
31.5	30 405 26.31.5	2.5	63.5	63	2.5	1	
40	30 405 26.40	2.5	63.5	63	2.5	1	
50	30 406 26.50	2.5	63.5	63	2.5	1	
63	30 406 26.63	2.5	63.5	63	2.5	1	
80	30 406 26.80	2.5	63.5	63	2.5	1	
100	30 406 26.100	2.5	63.5	63	2.5	1	
125	30 406 26.125	2.5	63.5	63	2.5	1	



**30 405 26**

- L1 10.0" (254 mm)
- L2 12.4" (315 mm)
- L3 11.42" (290 mm)

**30 406 26**

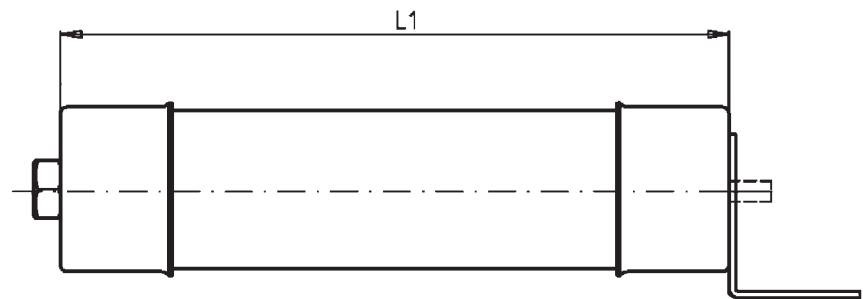
- L1 14.13" (359 mm)
- L2 16.54" (420 mm)
- L3 15.55" (395 mm)



**Medium Voltage Fuses for Capacitors**  
North American Style

<b>Rated Voltage</b> <b>AC 15.5 kV</b>	<b>Class</b> <b>Back-up</b>	<b>Thread</b> <b>M16</b>	<b>Standard</b> <b>IEC 60 282-1</b>
---	--------------------------------	-----------------------------	--

Rated Current [A]	Part No.	D = Diameter		Rated Breaking Current [kA]	Weight [kg/1]	Pack
		[inch]	[mm]			
6.3	30 407 26.6.3	2.5	63.5	63	1.8	1
10	30 407 26.10	2.5	63.5	63	1.8	1
16	30 407 26.16	2.5	63.5	63	1.8	1
20	30 407 26.20	2.5	63.5	63	1.8	1
25	30 407 26.25	2.5	63.5	63	1.8	1
31.5	30 407 26.31.5	2.5	63.5	63	1.8	1
40	30 407 26.40	2.5	63.5	63	1.8	1
50	30 408 26.50	2.5	63.5	63	1.8	1
63	30 408 26.63	2.5	63.5	63	1.8	1
80	30 408 26.80	2.5	63.5	63	1.8	1

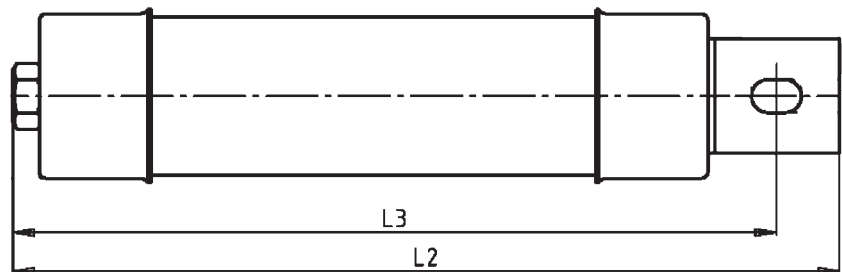


**30 407 26**

- L1 10.0" (254 mm)
- L2 12.4" (315 mm)
- L3 11.42" (290 mm)

**30 408 26**

- L1 14.13" (359 mm)
- L2 16.54" (420 mm)
- L3 15.55" (395 mm)

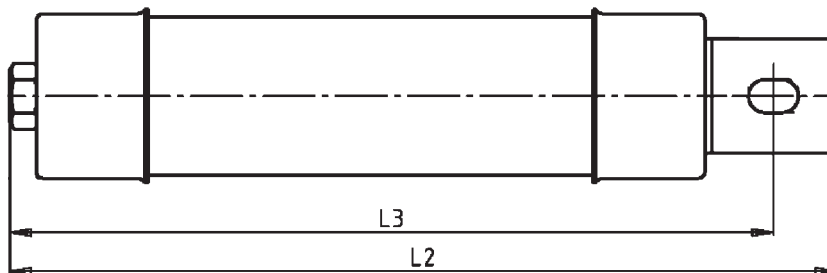
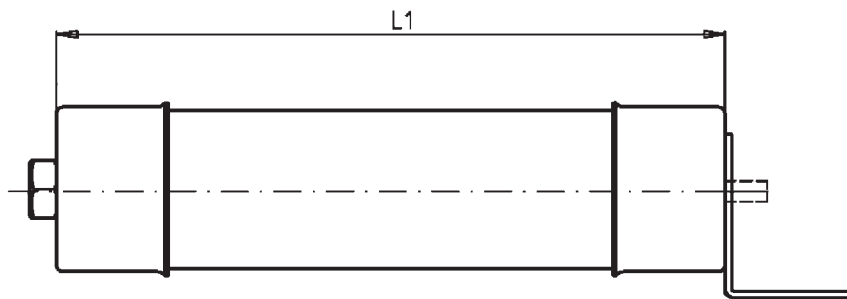




**Medium Voltage Fuses for Capacitors**  
North American Style

Rated Voltage <b>AC 23 kV</b>	Class <b>Back-up</b>	Thread <b>M16</b>	Standard <b>IEC 60 282-1</b>
----------------------------------	-------------------------	----------------------	---------------------------------

Rated Current [A]	Part No.	D = Diameter		Rated Breaking Current [kA]	Weight [kg/1]	Pack
		[inch]	[mm]			
6.3	30 409 26.6.3	2.5	63.5	63	2.5	1
10	30 409 26.10	2.5	63.5	63	2.5	1
16	30 409 26.16	2.5	63.5	63	2.5	1
20	30 409 26.20	2.5	63.5	63	2.5	1
25	30 409 26.25	2.5	63.5	63	2.5	1
31.5	30 409 26.31.5	2.5	63.5	63	2.5	1
40	30 409 26.40	2.5	63.5	63	2.5	1
50	30 409 26.50	2.5	63.5	63	2.5	1



<b>L1</b>	<b>14.13"</b> (359 mm)
<b>L2</b>	<b>16.54"</b> (420 mm)
<b>L3</b>	<b>15.55"</b> (395 mm)



**Medium Voltage Fuses for Capacitors**  
North American Style

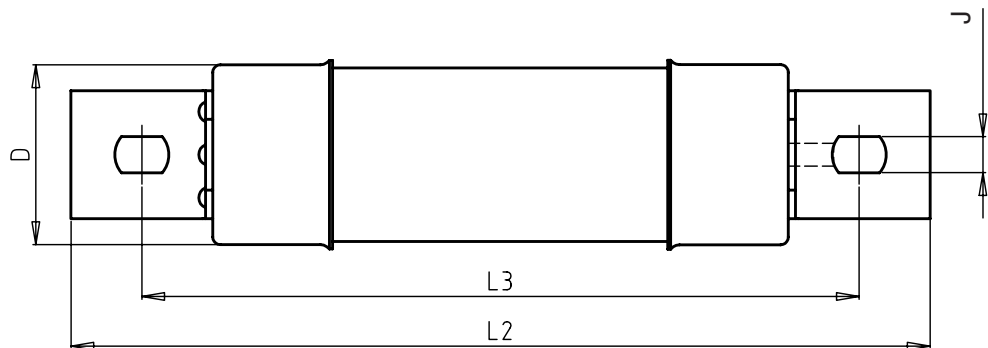
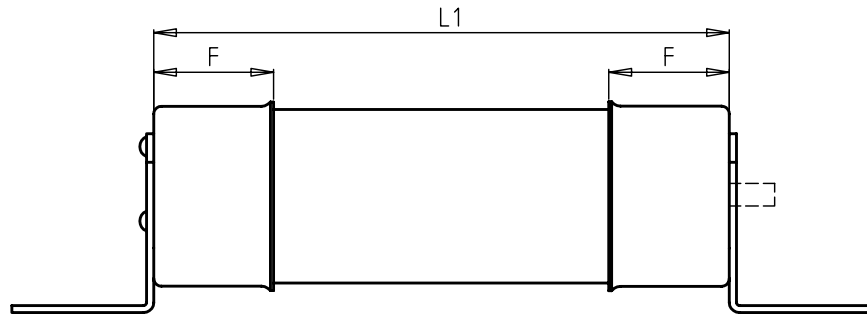
Rated Voltage  
**AC 5.5 kV**

Class  
**Back-up**

**Bus Mounting**

Standard  
**IEC 60 282-1**

Rated Current [A]	Part No.	D = Diameter		Rated Breaking Current [kA]	Weight [kg/1]	Pack
		[inch]	[mm]			
6.3	30 410 26.6.3	2.5	63.5	63	1.8	1
10	30 410 26.10	2.5	63.5	63	1.8	1
16	30 410 26.16	2.5	63.5	63	1.8	1
20	30 410 26.20	2.5	63.5	63	1.8	1
25	30 410 26.25	2.5	63.5	63	1.8	1
31.5	30 410 26.31.5	2.5	63.5	63	1.8	1
40	30 410 26.40	2.5	63.5	63	1.8	1
50	30 410 26.50	2.5	63.5	63	1.8	1
63	30 410 26.63	2.5	63.5	63	1.8	1
80	30 410 26.80	2.5	63.5	63	1.8	1
100	30 410 26.100	2.5	63.5	63	1.8	1
125	30 410 26.125	2.5	63.5	63	1.8	1



**30 410 26**

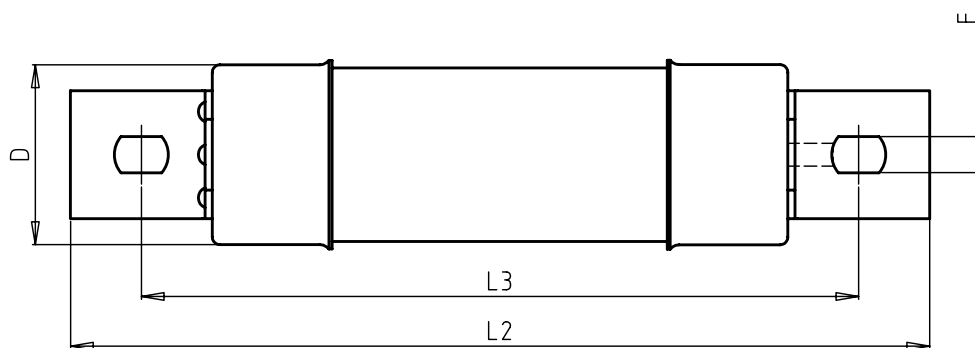
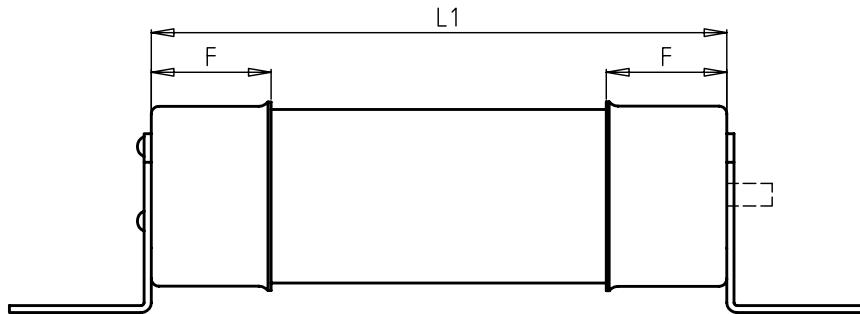
- D** 2.5" (63,5 mm)
- F** 1.67" (42,5 mm)
- J** 0.5" (12,7 mm)
- L1** 10.00" (254 mm)
- L2** 13.94" (354 mm)
- L3** 11.97" (304 mm)



**Medium Voltage Fuses for Capacitors**  
North American Style

Rated Voltage **AC 8.3 kV**      Class **Back-up**      Bus Mounting      Standard **IEC 60 282-1**

Rated Current [A]	Part No.	D = Diameter		Rated Breaking Current [kA]	Weight [kg/1]	Pack	
		[inch]	[mm]				
6.3	30 411 26.6.3	2.5	63.5	63	2.5	1	
10	30 411 26.10	2.5	63.5	63	2.5	1	
16	30 411 26.16	2.5	63.5	63	2.5	1	
20	30 411 26.20	2.5	63.5	63	2.5	1	
25	30 411 26.25	2.5	63.5	63	2.5	1	
31.5	30 411 26.31.5	2.5	63.5	63	2.5	1	
40	30 411 26.40	2.5	63.5	63	2.5	1	
50	30 412 26.50	2.5	63.5	63	2.5	1	
63	30 412 26.63	2.5	63.5	63	2.5	1	
80	30 412 26.80	2.5	63.5	63	2.5	1	
100	30 412 26.100	2.5	63.5	63	2.5	1	
125	30 412 26.125	2.5	63.5	63	2.5	1	



**30 411 26**

<b>D</b>	<b>2.5" (63,5 mm)</b>
<b>F</b>	<b>1.67" (42,5 mm)</b>
<b>J</b>	<b>0.5" (12,7 mm)</b>
<b>L1</b>	<b>10.00" (254 mm)</b>
<b>L2</b>	<b>13.94" (354 mm)</b>
<b>L3</b>	<b>11.97" (304 mm)</b>

**30 412 26**

<b>D</b>	<b>2.5" (63,5 mm)</b>
<b>F</b>	<b>1.67" (42,5 mm)</b>
<b>J</b>	<b>0.5" (12,7 mm)</b>
<b>L1</b>	<b>14.13" (359 mm)</b>
<b>L2</b>	<b>18.07" (459 mm)</b>
<b>L3</b>	<b>16.1" (409 mm)</b>



**Medium Voltage Fuses for Capacitors**  
North American Style

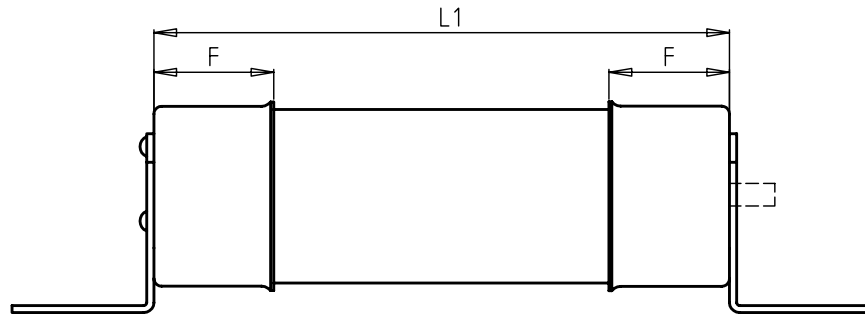
Rated Voltage  
**AC 15.5 kV**

Class  
**Back-up**

**Bus Mounting**

Standard  
**IEC 60 282-1**

Rated Current [A]	Part No.	D = Diameter		Rated Breaking Current [kA]	Weight [kg/1]	Pack
		[inch]	[mm]			
6.3	30 414 26.6.3	2.5	63.5	63	1.8	1
10	30 414 26.10	2.5	63.5	63	1.8	1
16	30 414 26.16	2.5	63.5	63	1.8	1
20	30 414 26.20	2.5	63.5	63	1.8	1
25	30 414 26.25	2.5	63.5	63	1.8	1
31.5	30 414 26.31.5	2.5	63.5	63	1.8	1
40	30 414 26.40	2.5	63.5	63	1.8	1
50	30 415 26.50	2.5	63.5	63	1.8	1
63	30 415 26.63	2.5	63.5	63	1.8	1
80	30 415 26.80	2.5	63.5	63	1.8	1

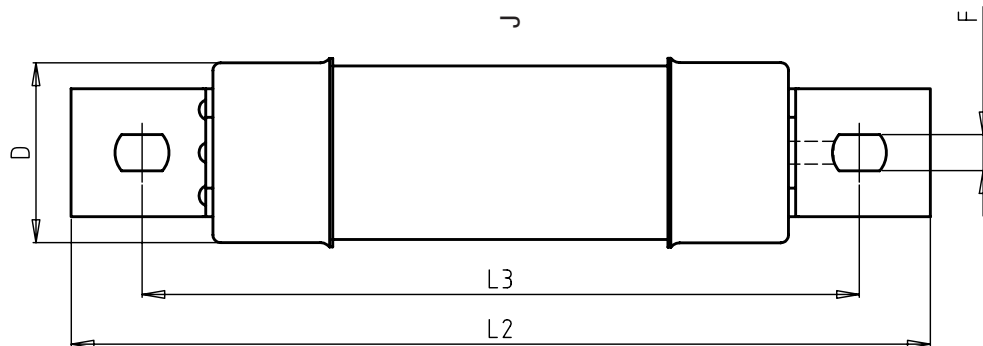


**30 414 26**

- D** 2.5" (63,5 mm)
- F** 1.67" (42,5 mm)
- J** 0.5" (12,7 mm)
- L1** 10.00" (254 mm)
- L2** 13.94" (354 mm)
- L3** 11.97" (304 mm)

**30 415 26**

- D** 2.5" (63,5 mm)
- F** 1.67" (42,5 mm)
- J** 0.5" (12,7 mm)
- L1** 14.13" (359 mm)
- L2** 18.07" (459 mm)
- L3** 16.1" (409 mm)



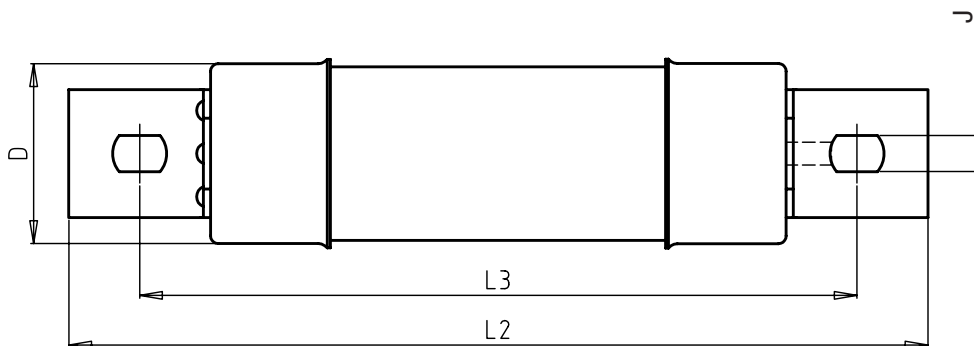
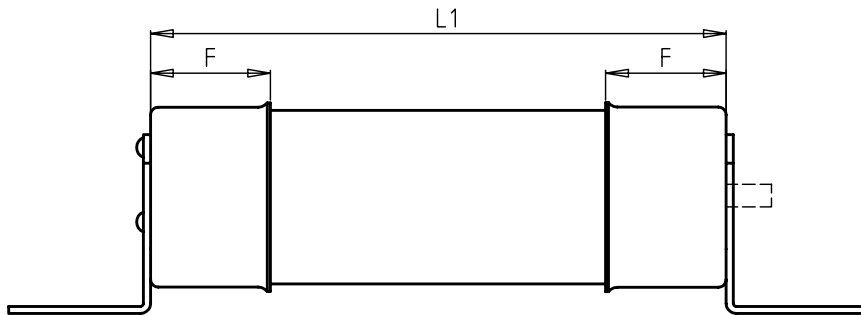




**Medium Voltage Fuses for Capacitors**  
North American Style

Rated Voltage **AC 23 kV**      Class **Back-up**      Bus Mounting      Standard **IEC 60 282-1**

Rated Current [A]	Part No.	D = Diameter		Rated Breaking Current [kA]	Weight [kg/1]	Pack
		[inch]	[mm]			
6.3	30 416 266.3	2.5	63.5	63	2.5	1
10	30 416 26.10	2.5	63.5	63	2.5	1
16	30 416 26.16	2.5	63.5	63	2.5	1
20	30 416 26.20	2.5	63.5	63	2.5	1
25	30 416 26.25	2.5	63.5	63	2.5	1
31.5	30 416 26.31.5	2.5	63.5	63	2.5	1
40	30 416 26.40	2.5	63.5	63	2.5	1
50	30 416 26.50	2.5	63.5	63	2.5	1



30 416 26	
D	2.5" (63,5 mm)
F	1.67" (42,5 mm)
J	0.5" (12,7 mm)
L1	14.13" (359 mm)
L2	18.07" (459 mm)
L3	16.1" (409 mm)

Rated Voltage  
**AC 5.5 kV**

 Class  
**Back-up**

 Thread  
**1/2" UNC**
**Bus Mounting**

Rated Current [A]	Part No.	Rated Breaking Current [kA]	Pre-arcing I <sup>2</sup> t-value [A <sup>2</sup> s]	Total I <sup>2</sup> t-value [A <sup>2</sup> s]	Power Loss [W]
6.3	30 384 26.6.3	63	45	330	12
10	30 384 26.10	63	75	500	21
16	30 384 26.16	63	250	1 800	14
20	30 384 26.20	63	640	4 300	15
25	30 384 26.25	63	1 050	6 700	17
31.5	30 384 26.31.5	63	1 700	10 800	22
40	30 384 26.40	63	2 900	17 100	29
50	30 384 26.50	63	5 700	29 700	33
63	30 384 26.63	63	10 700	59 400	41
80	30 384 26.80	63	21 000	126 000	46
100	30 384 26.100	63	33 000	189 000	60
125	30 384 26.125	63	47 000	351 000	86

 Rated Voltage  
**AC 8.3 kV**

 Class  
**Back-up**

 Thread  
**1/2" UNC**
**Bus Mounting**

Rated Current [A]	Part No.	Rated Breaking Current [kA]	Pre-arcing I <sup>2</sup> t-value [A <sup>2</sup> s]	Total I <sup>2</sup> t-value [A <sup>2</sup> s]	Power Loss [W]
6.3	30 387 26.6.3	63	45	330	18
10	30 387 26.10	63	75	500	25
16	30 387 26.16	63	250	1 800	22
20	30 387 26.20	63	640	4 300	24
25	30 387 26.25	63	1 050	6 700	28
31.5	30 387 26.31.5	63	1 700	10 800	35
40	30 387 26.40	63	2 900	17 100	45
50	30 388 26.50	63	5 700	29 700	52
63	30 388 26.63	63	10 700	59 400	64
80	30 388 26.80	63	21 000	126 000	73
100	30 388 26.100	63	33 000	189 000	95
125	30 388 26.125	63	47 000	351 000	136

**Time-current characteristics and cut-off current diagram  
 please refer to pages HHC 32 and HHC 33**

Rated Voltage <b>AC 15.5 kV</b>	Class <b>Back-up</b>	Thread <b>1/2" UNC</b>	<b>Bus Mounting</b>
------------------------------------	-------------------------	---------------------------	---------------------

Rated Current [A]	Part No.	Rated Breaking Current [kA]	Pre-arcing I <sup>2</sup> t-value [A <sup>2</sup> s]	Total I <sup>2</sup> t-value [A <sup>2</sup> s]	Power Loss [W]
6.3	30 386 26.6.3	63	45	330	21
10	30 386 26.10	63	75	500	38
16	30 386 26.16	63	250	1 800	37
20	30 386 26.20	63	640	4 300	40
25	30 386 26.25	63	1 050	6 700	56
31.5	30 386 26.31.5	63	1 700	10 800	65
40	30 386 26.40	63	2 900	17 100	84
50	30 389 26.50	63	5 700	29 700	101
63	30 389 26.63	63	10 700	59 400	106
80	30 389 26.80	63	21 000	126 000	137

Rated Voltage <b>AC 23 kV</b>	Class <b>Back-up</b>	Thread <b>1/2" UNC</b>	<b>Bus Mounting</b>
----------------------------------	-------------------------	---------------------------	---------------------

Rated Current [A]	Part No.	Breaking Current [kA]	Pre-arcing I <sup>2</sup> t-value [A <sup>2</sup> s]	Total I <sup>2</sup> t-value [A <sup>2</sup> s]	Power Loss [W]
6.3	30 390 26.6.3	63	45	330	31
10	30 390 26.10	63	75	500	57
16	30 390 26.16	63	250	1 800	56
20	30 390 26.20	63	640	4 300	60
25	30 390 26.25	63	1 050	6 700	84
31.5	30 390 26.31.5	63	1 700	10 800	95
40	30 390 26.40	63	2 900	17 100	125
50	30 390 26.50	63	5 700	29 700	151

**Time-current characteristics and cut-off current diagram please refer to pages HHC 32 and HHC 33**

Rated Voltage  
**AC 5.5 kV**

 Class  
**Back-up**

 Thread  
**M16**
**Bus Mounting**

Rated Current [A]	Part No.	Rated Breaking Current [kA]	Pre-arcing I <sup>2</sup> t-value [A <sup>2</sup> s]	Total I <sup>2</sup> t-value [A <sup>2</sup> s]	Power Loss [W]
6.3	30 404 26.6.3	63	45	330	12
10	30 404 26.10	63	75	500	21
16	30 404 26.16	63	250	1 800	14
20	30 404 26.20	63	640	4 300	15
25	30 404 26.25	63	1 050	6 700	17
31.5	30 404 26.31.5	63	1 700	10 800	22
40	30 404 26.40	63	2 900	17 100	29
50	30 404 26.50	63	5 700	29 700	33
63	30 404 26.63	63	10 700	59 400	41
80	30 404 26.80	63	21 000	126 000	46
100	30 404 26.100	63	33 000	189 000	60
125	30 404 26.125	63	47 000	351 000	86

 Rated Voltage  
**AC 8.3 kV**

 Class  
**Back-up**

 Thread  
**M16**
**Bus Mounting**

Rated Current [A]	Part No.	Rated Breaking Current [kA]	Pre-arcing I <sup>2</sup> t-value [A <sup>2</sup> s]	Total I <sup>2</sup> t-value [A <sup>2</sup> s]	Power Loss [W]
6.3	30 405 26.6.3	63	45	330	18
10	30 405 26.10	63	75	500	25
16	30 405 26.16	63	250	1 800	22
20	30 405 26.20	63	640	4 300	24
25	30 405 26.25	63	1 050	6 700	28
31.5	30 405 26.31.5	63	1 700	10 800	35
40	30 405 26.40	63	2 900	17 100	45
50	30 406 26.50	63	5 700	29 700	52
63	30 406 26.63	63	10 700	59 400	64
80	30 406 26.80	63	21 000	126 000	73
100	30 406 26.100	63	33 000	189 000	95
125	30 406 26.125	63	47 000	351 000	136

**Time-current characteristics and cut-off current diagram  
 please refer to pages HHC 32 and HHC 33**

Rated Voltage <b>AC 15.5 kV</b>	Class <b>Back-up</b>	Thread <b>M16</b>	<b>Bus Mounting</b>
------------------------------------	-------------------------	----------------------	---------------------

Rated Current [A]	Part No.	Rated Breaking Current [kA]	Pre-arcing I <sup>2</sup> t-value [A <sup>2</sup> s]	Total I <sup>2</sup> t-value [A <sup>2</sup> s]	Power Loss [W]
6.3	30 407 26.6.3	63	45	330	21
10	30 407 26.10	63	75	500	38
16	30 407 26.16	63	250	1 800	37
20	30 407 26.20	63	640	4 300	40
25	30 407 26.25	63	1 050	6 700	56
31.5	30 407 26.31.5	63	1 700	10 800	65
40	30 407 26.40	63	2 900	17 100	84
50	30 408 26.50	63	5 700	29 700	101
63	30 408 26.63	63	10 700	59 400	106
80	30 408 26.80	63	21 000	126 000	137

Rated Voltage <b>AC 23 kV</b>	Class <b>Back-up</b>	Thread <b>M16</b>	<b>Bus Mounting</b>
----------------------------------	-------------------------	----------------------	---------------------

Rated Current [A]	Part No.	Rated Breaking Current [kA]	Pre-arcing I <sup>2</sup> t-value [A <sup>2</sup> s]	Total I <sup>2</sup> t-value [A <sup>2</sup> s]	Power Loss [W]
6.3	30 409 26.6.3	63	45	330	31
10	30 409 26.10	63	75	500	57
16	30 409 26.16	63	250	1 800	56
20	30 409 26.20	63	640	4 300	60
25	30 409 26.25	63	1 050	6 700	84
31.5	30 409 26.31.5	63	1 700	10 800	95
40	30 409 26.40	63	2 900	17 100	125
50	30 409 26.50	63	5 700	29 700	151

**Time-current characteristics and cut-off current diagram please refer to pages HHC 32 and HHC 33**

Rated Voltage  
**AC 5.5 kV**

 Class  
**Back-up**
**Bus Mounting**

Rated Current [A]	Part No.	Breaking Current [kA]	Pre-arcing I <sup>2</sup> t-value [A <sup>2</sup> s]	Total I <sup>2</sup> t-value [A <sup>2</sup> s]	Power Loss [W]
6.3	30 410 26.6.3	63	45	330	12
10	30 410 26.10	63	75	500	21
16	30 410 26.16	63	250	1 800	14
20	30 410 26.20	63	640	4 300	15
25	30 410 26.25	63	1 050	6 700	17
31.5	30 410 26.31.5	63	1 700	10 800	22
40	30 410 26.40	63	2 900	17 100	29
50	30 410 26.50	63	5 700	29 700	33
63	30 410 26.63	63	10 700	59 400	41
80	30 410 26.80	63	21 000	126 000	46
100	30 410 26.100	63	33 000	189 000	60
125	30 410 26.125	63	47 000	351 000	86

 Rated Voltage  
**AC 8.3 kV**

 Class  
**Back-up**
**Bus Mounting**

Rated Current [A]	Part No.	Rated Breaking Current [kA]	Pre-arcing I <sup>2</sup> t-value [A <sup>2</sup> s]	Total I <sup>2</sup> t-value [A <sup>2</sup> s]	Power Loss [W]
6.3	30 411 26.6.3	63	45	330	18
10	30 411 26.10	63	75	500	25
16	30 411 26.16	63	250	1 800	22
20	30 411 26.20	63	640	4 300	24
25	30 411 26.25	63	1 050	6 700	28
31.5	30 411 26.31.5	63	1 700	10 800	35
40	30 411 26.40	63	2 900	17 100	45
50	30 412 26.50	63	5 700	29 700	52
63	30 412 26.63	63	10 700	59 400	64
80	30 412 26.80	63	21 000	126 000	73
100	30 412 26.100	63	33 000	189 000	95
125	30 412 26.125	63	47 000	351 000	136

**Time-current characteristics and cut-off current diagram  
 please refer to pages HHC 32 and HHC 33**

Rated Voltage **AC 15.5 kV**      Class **Back-up**      **Bus Mounting**

Rated Current [A]	Part No.	Rated Breaking Current [kA]	Pre-arcing I <sup>2</sup> t-value [A <sup>2</sup> s]	Total I <sup>2</sup> t-value [A <sup>2</sup> s]	Power Loss [W]
6.3	30 414 26.6.3	63	45	330	21
10	30 414 26.10	63	75	500	38
16	30 414 26.16	63	250	1 800	37
20	30 414 26.20	63	640	4 300	40
25	30 414 26.25	63	1 050	6 700	56
31.5	30 414 26.31.5	63	1 700	10 800	65
40	30 414 26.40	63	2 900	17 100	84
50	30 415 26.50	63	5 700	29 700	101
63	30 415 26.63	63	10 700	59 400	106
80	30 415 26.80	63	21 000	126 000	137

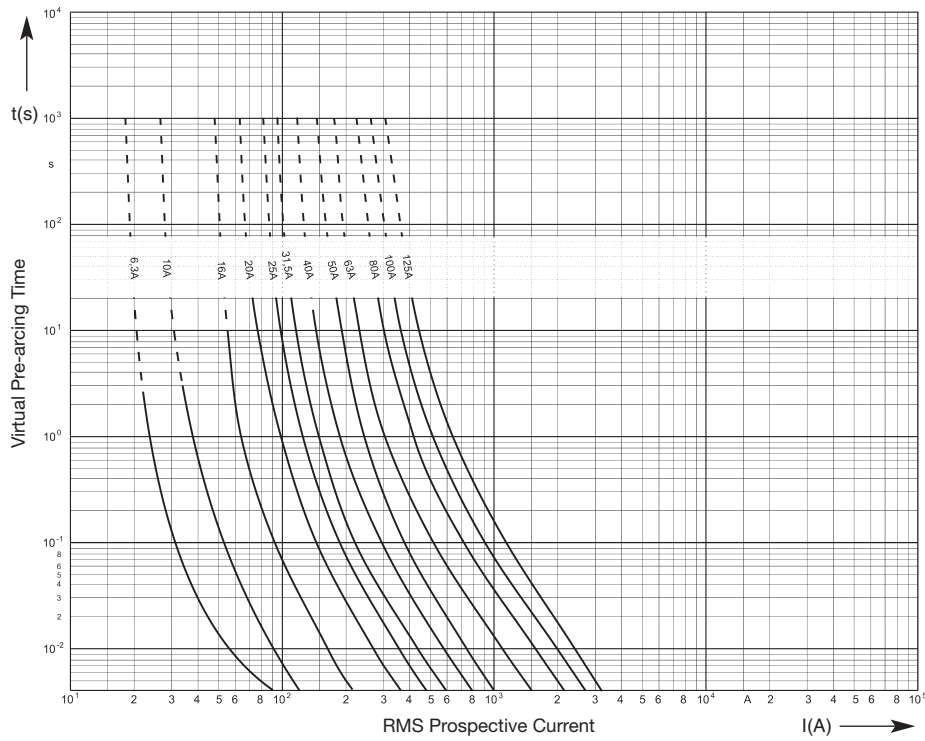
Rated Voltage **AC 23 kV**      Class **Back-up**      **Bus Mounting**

Rated Current [A]	Part No.	Rated Breaking Current [kA]	Pre-arcing I <sup>2</sup> t-value [A <sup>2</sup> s]	Total I <sup>2</sup> t-value [A <sup>2</sup> s]	Power Loss [W]
6.3	30 416 26.6.3	63	45	330	31
10	30 416 26.10	63	75	500	57
16	30 416 26.16	63	250	1 800	56
20	30 416 26.20	63	640	4 300	60
25	30 416 26.25	63	1 050	6 700	84
31.5	30 416 26.31.5	63	1 700	10 800	95
40	30 416 26.40	63	2 900	17 100	125
50	30 416 26.50	63	5 700	29 700	151

**Time-current characteristics and cut-off current diagram please refer to pages HHC 32 and HHC 33**

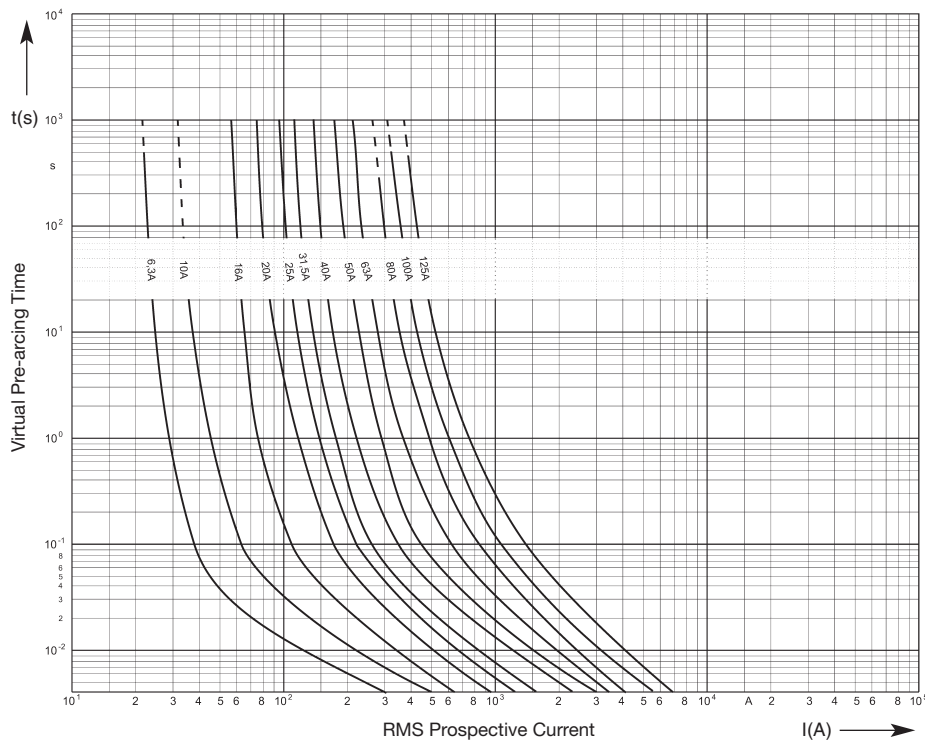
**Time-Current Characteristics  
Minimum Melting**

**Back-up**



**Time-Current Characteristics  
Total Clearing**

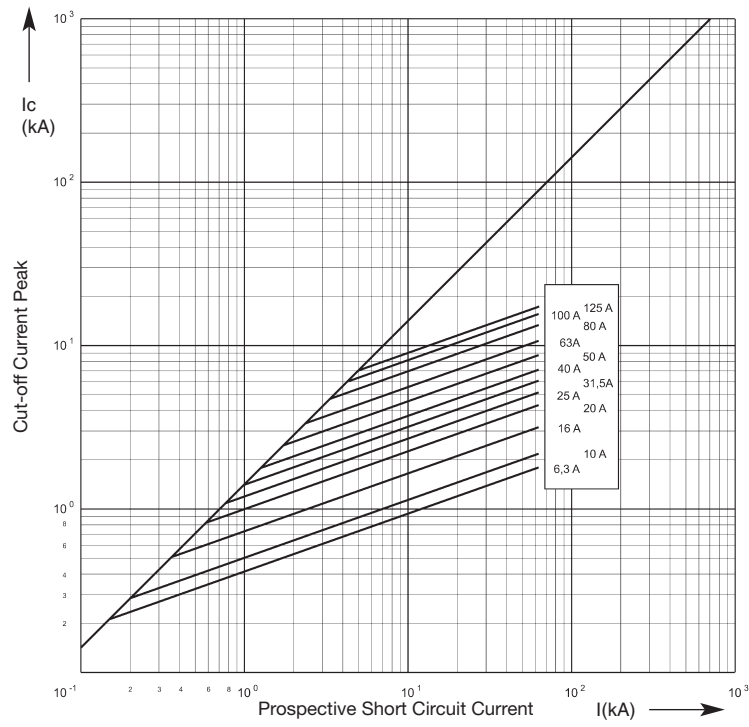
**Back-up**





Cut-Off Current Diagram

Back-up





## Medium Voltage Fuses for Capacitors North American Style

**Micro Switch Fitting to HV-Fuse-bases**  
**L = 660 mm**

**Part no.**  
**31 002 10**

**Micro switch**  
**Part No. 28 001 04**  
250 V / 6 A  
1 change over contact

**Flexible  
Cable**

**Connection bar  
of the  
spring clip contact**  
**Part No. 34 002 01**

**HV-Fuse-cap**

