

CURRENT TRANSFORMERS

Technology You Can Trust

Current Transformers

Solid Core – Narrow Profile (Single Phase)

| | |
|----------------------------------|-----|
| TU20PS, TU30PS, TU40PS, TU50PS | 176 |
| TU60PS, TU80PS, TU100PS, TU125PS | 177 |

Solid Core – Narrow Profile & High Accuracy (Single Phase)

| | |
|------------------------------|-----|
| TU100PSH, DIN Rail Accessory | 178 |
|------------------------------|-----|

Solid Core – Narrow Profile (Three Phase)

| | |
|--------------------|-----|
| TU20PS-3, TU30PS-3 | 179 |
|--------------------|-----|

Solid Core – High Accuracy

| | |
|---------------------|-----|
| TUC30, TUC40, TUC50 | 180 |
| TUC60, TUC80 | 181 |

Split Core

| | |
|------------------------|-----|
| TA30P, TA60P, TA80P | 182 |
| TA100P, TA125P, TA160P | 183 |

CTs for Littelfuse Protection Relays

| | |
|--|-----|
| EFCT Series, EFCT-RF Series, CT200, SE-CS10 Series | 184 |
| SE-CS30 Series, SE-CS40 Series, MPU Series | 185 |
| DMC/5 Series, DMC/1 Series | 186 |

Solid Core – Narrow Profile

TU20PS

Single Phase



| PART NO. | AMP RATIO | BUSBAR (mm) | CABLE (mm ²) | CLASS 0.5 | CLASS 1 | CLASS 3 |
|--------------|-----------|-------------|--------------------------|-----------|---------|---------|
| | | | | VA | VA | VA |
| TU20PS-30/5 | 30/5 | 20x6 | 18 | - | - | 0.5 |
| TU20PS-40/5 | 40/5 | 20x6 | 18 | - | - | 1 |
| TU20PS-50/5 | 50/5 | 20x6 | 18 | - | - | 1 |
| TU20PS-60/5 | 60/5 | 20x6 | 18 | - | 1 | 1.5 |
| TU20PS-75/5 | 75/5 | 20x6 | 18 | - | 1.5 | 1.5 |
| TU20PS-100/5 | 100/5 | 20x6 | 18 | - | 1.5 | 2.5 |
| TU20PS-125/5 | 125/5 | 20x6 | 18 | 1.5 | 2.5 | 3.75 |
| TU20PS-150/5 | 150/5 | 20x6 | 18 | 2.5 | 3.75 | 5 |
| TU20PS-200/5 | 200/5 | 20x6 | 18 | 3.75 | 5 | 5 |
| TU20PS-250/5 | 250/5 | 20x6 | 18 | 5 | 7.5 | 7.5 |

TU30PS

Single Phase



| PART NO. | AMP RATIO | BUSBAR (mm) | CABLE (mm ²) | CLASS 0.5 | CLASS 1 | CLASS 3 |
|--------------|-----------|-------------|--------------------------|-----------|---------|---------|
| | | | | VA | VA | VA |
| TU30PS-100/5 | 100/5 | 30x10 | 25 | - | - | 1.5 |
| TU30PS-125/5 | 125/5 | 30x10 | 25 | - | - | 1.5 |
| TU30PS-150/5 | 150/5 | 30x10 | 25 | 1.5 | 2.5 | - |
| TU30PS-200/5 | 200/5 | 30x10 | 25 | 2.5 | 3.75 | - |
| TU30PS-250/5 | 250/5 | 30x10 | 25 | 3.75 | 5 | - |
| TU30PS-300/5 | 300/5 | 30x10 | 25 | 3.75 | 5 | - |
| TU30PS-400/5 | 400/5 | 30x10 | 25 | 3.75 | 5 | - |
| TU30PS-500/5 | 500/5 | 30x10 | 25 | 5 | 7.5 | - |
| TU30PS-600/5 | 600/5 | 30x10 | 25 | 5 | 7.5 | - |

TU40PS

Single Phase



| PART NO. | AMP RATIO | BUSBAR (mm) | CABLE (mm ²) | CLASS 0.5 | CLASS 1 | CLASS 3 |
|--------------|-----------|-------------|--------------------------|-----------|---------|---------|
| | | | | VA | VA | VA |
| TU40PS-150/5 | 150/5 | 40x10 | 30 | - | 2 | - |
| TU40PS-200/5 | 200/5 | 40x10 | 30 | 2.5 | 3.75 | - |
| TU40PS-250/5 | 250/5 | 40x10 | 30 | 2.5 | 3.75 | - |
| TU40PS-300/5 | 300/5 | 40x10 | 30 | 5 | 5 | - |
| TU40PS-400/5 | 400/5 | 40x10 | 30 | 5 | 5 | - |
| TU40PS-500/5 | 500/5 | 40x10 | 30 | 5 | 7.5 | - |
| TU40PS-600/5 | 600/5 | 40x10 | 30 | 5 | 7.5 | - |
| TU40PS-750/5 | 750/5 | 40x10 | 30 | 5 | 7.5 | - |
| TU40PS-800/5 | 800/5 | 40x10 | 30 | 5 | 7.5 | - |

TU50PS

Single Phase



| PART NO. | AMP RATIO | BUSBAR (mm) | CABLE (mm ²) | CLASS 0.5 | CLASS 1 | CLASS 3 |
|---------------|-----------|-------------|--------------------------|-----------|---------|---------|
| | | | | VA | VA | VA |
| TU50PS-400/5 | 400/5 | 50x10 | 40 | 3.75 | 5 | - |
| TU50PS-500/5 | 500/5 | 50x10 | 40 | 5 | 7.5 | - |
| TU50PS-600/5 | 600/5 | 50x10 | 40 | 7.5 | 10 | - |
| TU50PS-750/5 | 750/5 | 50x10 | 40 | 7.5 | 10 | - |
| TU50PS-800/5 | 800/5 | 50x10 | 40 | 7.5 | 10 | - |
| TU50PS-1000/5 | 1000/5 | 50x10 | 40 | 10 | 15 | - |

Solid Core – Narrow Profile

TU60PS

Single Phase



| PART NO. | AMP RATIO | BUSBAR (mm) | CABLE (mm ²) | CLASS 0.5 | CLASS 1 | CLASS 3 |
|---------------|-----------|-------------|--------------------------|-----------|---------|---------|
| | | | | VA | VA | VA |
| TU60PS-400/5 | 400/5 | 60x10 | 50 | 5 | 5 | - |
| TU60PS-500/5 | 500/5 | 60x10 | 50 | 5 | 7.5 | - |
| TU60PS-600/5 | 600/5 | 60x10 | 50 | 5 | 7.5 | - |
| TU60PS-750/5 | 750/5 | 60x10 | 50 | 5 | 7.5 | - |
| TU60PS-800/5 | 800/5 | 60x10 | 50 | 7.5 | 10 | - |
| TU60PS-1000/5 | 1000/5 | 60x10 | 50 | 10 | 15 | - |
| TU60PS-1200/5 | 1200/5 | 60x10 | 50 | 15 | 20 | - |
| TU60PS-1500/5 | 1500/5 | 60x10 | 50 | 15 | 20 | - |
| TU60PS-1600/5 | 1600/5 | 60x10 | 50 | 15 | 20 | - |

TU80PS

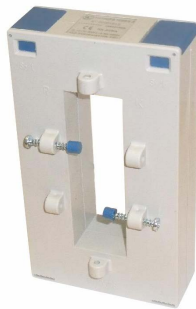
Single Phase



| PART NO. | AMP RATIO | BUSBAR (mm) | CABLE (mm ²) | CLASS 0.5 | CLASS 1 | CLASS 3 |
|---------------|-----------|-------------|--------------------------|-----------|---------|---------|
| | | | | VA | VA | VA |
| TU80PS-400/5 | 400/5 | 80x30 | 70 | 5 | 7.5 | - |
| TU80PS-500/5 | 500/5 | 80x30 | 70 | 5 | 7.5 | - |
| TU80PS-600/5 | 600/5 | 80x30 | 70 | 7.5 | 10 | - |
| TU80PS-750/5 | 750/5 | 80x30 | 70 | 7.5 | 10 | - |
| TU80PS-800/5 | 800/5 | 80x30 | 70 | 7.5 | 10 | - |
| TU80PS-1000/5 | 1000/5 | 80x30 | 70 | 10 | 15 | - |
| TU80PS-1200/5 | 1200/5 | 80x30 | 70 | 15 | 20 | - |
| TU80PS-1500/5 | 1500/5 | 80x30 | 70 | 15 | 20 | - |
| TU80PS-1600/5 | 1600/5 | 80x30 | 70 | 15 | 20 | - |
| TU80PS-2000/5 | 2000/5 | 80x30 | 70 | 15 | 20 | - |

TU100PS

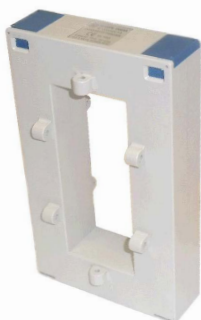
Single Phase



| PART NO. | AMP RATIO | BUSBAR (mm) | CABLE (mm ²) | CLASS 0.5 | CLASS 1 | CLASS 3 |
|----------------|-----------|-------------|--------------------------|-----------|---------|---------|
| | | | | VA | VA | VA |
| TU100PS-500/5 | 500/5 | 100x30 | 33 | 5 | 7.5 | - |
| TU100PS-600/5 | 600/5 | 100x30 | 33 | 7.5 | 10 | - |
| TU100PS-750/5 | 750/5 | 100x30 | 33 | 7.5 | 10 | - |
| TU100PS-800/5 | 800/5 | 100x30 | 33 | 7.5 | 10 | - |
| TU100PS-1000/5 | 1000/5 | 100x30 | 33 | 10 | 15 | - |
| TU100PS-1200/5 | 1200/5 | 100x30 | 33 | 15 | 20 | - |
| TU100PS-1500/5 | 1500/5 | 100x30 | 33 | 15 | 20 | - |
| TU100PS-1600/5 | 1600/5 | 100x30 | 33 | 15 | 20 | - |
| TU100PS-2000/5 | 2000/5 | 100x30 | 33 | 15 | 20 | - |
| TU100PS-2500/5 | 2500/5 | 100x30 | 33 | 20 | 25 | - |
| TU100PS-3000/5 | 3000/5 | 100x30 | 33 | 20 | 25 | - |

TU125PS

Single Phase



| PART NO. | AMP RATIO | BUSBAR (mm) | CABLE (mm ²) | CLASS 0.5 | CLASS 1 | CLASS 3 |
|----------------|-----------|-------------|--------------------------|-----------|---------|---------|
| | | | | VA | VA | VA |
| TU125PS-500/5 | 500/5 | 125x50 | 53 | 5 | 7.5 | - |
| TU125PS-600/5 | 600/5 | 125x50 | 53 | 5 | 7.5 | - |
| TU125PS-750/5 | 750/5 | 125x50 | 53 | 7.5 | 10 | - |
| TU125PS-800/5 | 800/5 | 125x50 | 53 | 7.5 | 10 | - |
| TU125PS-1000/5 | 1000/5 | 125x50 | 53 | 10 | 15 | - |
| TU125PS-1200/5 | 1200/5 | 125x50 | 53 | 15 | 20 | - |
| TU125PS-1500/5 | 1500/5 | 125x50 | 53 | 15 | 20 | - |
| TU125PS-1600/5 | 1600/5 | 125x50 | 53 | 15 | 20 | - |
| TU125PS-2000/5 | 2000/5 | 125x50 | 53 | 20 | 25 | - |
| TU125PS-2500/5 | 2500/5 | 125x50 | 53 | 20 | 25 | - |
| TU125PS-3000/5 | 3000/5 | 125x50 | 53 | 20 | 25 | - |
| TU125PS-4000/5 | 4000/5 | 125x50 | 53 | 25 | 30 | - |

Solid Core – Narrow Profile & High Accuracy

TU100PSH

Single Phase
High Accuracy



| PART NO. | AMP RATIO | BUSBAR (mm) | CABLE (mm ²) | CLASS 0.5 | CLASS 1 | CLASS 3 |
|-----------------|-----------|----------------|--------------------------|-----------|---------|---------|
| | | | | VA | VA | VA |
| TU100PSH-400/5 | 400/5 | 100x30 / 80x50 | 85 | - | 10 | - |
| TU100PSH-500/5 | 500/5 | 100x30 / 80x50 | 85 | 5 | 10 | - |
| TU100PSH-600/5 | 600/5 | 100x30 / 80x50 | 85 | 15 | 15 | - |
| TU100PSH-750/5 | 750/5 | 100x30 / 80x50 | 85 | 15 | 15 | - |
| TU100PSH-800/5 | 800/5 | 100x30 / 80x50 | 85 | 15 | 15 | - |
| TU100PSH-1000/5 | 1000/5 | 100x30 / 80x50 | 85 | 15 | 15 | - |
| TU100PSH-1200/5 | 1200/5 | 100x30 / 80x50 | 85 | 15 | 15 | - |
| TU100PSH-1500/5 | 1500/5 | 100x30 / 80x50 | 85 | 15 | 15 | - |
| TU100PSH-1600/5 | 1600/5 | 100x30 / 80x50 | 85 | 15 | 15 | - |
| TU100PSH-2000/5 | 2000/5 | 100x30 / 80x50 | 85 | 15 | 15 | - |
| TU100PSH-2500/5 | 2500/5 | 100x30 / 80x50 | 85 | 15 | 15 | - |
| TU100PSH-3000/5 | 3000/5 | 100x30 / 80x50 | 85 | 15 | 15 | - |
| TU100PSH-4000/5 | 4000/5 | 100x30 / 80x50 | 85 | 15 | 15 | - |
| TU100PSH-5000/5 | 5000/5 | 100x30 / 80x50 | 85 | 15 | 15 | - |

DIN Rail Accessory



| PART NO. | DESCRIPTION |
|---------------|--|
| TU-PS-DIN-ACC | DIN Rail Accessory to suit Narrow Profile Current Transformers |



Solid Core – Narrow Profile (Three Phase)

TU20PS-3

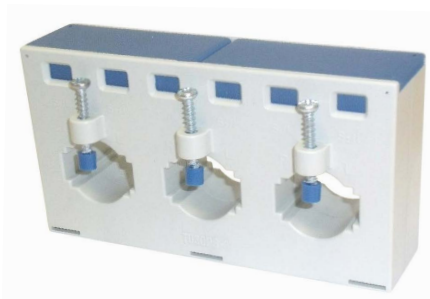
Three Phase



| PART NO. | AMP RATIO | BUSBAR (mm) | CABLE (mm ²) | CLASS 0.5 | CLASS 1 | CLASS 3 |
|----------------|-----------|-------------|--------------------------|-----------|---------|---------|
| | | | | VA | VA | VA |
| TU20PS-3-30/5 | 30/5 | 20x6 | 18 | - | - | 0.5 |
| TU20PS-3-40/5 | 40/5 | 20x6 | 18 | - | - | 1 |
| TU20PS-3-50/5 | 50/5 | 20x6 | 18 | - | - | 1 |
| TU20PS-3-60/5 | 60/5 | 20x6 | 18 | - | 1 | 1 |
| TU20PS-3-75/5 | 75/5 | 20x6 | 18 | - | 1 | 1.5 |
| TU20PS-3-100/5 | 100/5 | 20x6 | 18 | - | 1.25 | 1.5 |
| TU20PS-3-125/5 | 125/5 | 20x6 | 18 | 1 | 1.5 | 2.5 |
| TU20PS-3-150/5 | 150/5 | 20x6 | 18 | 1 | 1.5 | 2.5 |
| TU20PS-3-200/5 | 200/5 | 20x6 | 18 | 1.5 | 2.5 | 3.75 |
| TU20PS-3-250/5 | 250/5 | 20x6 | 18 | 2.5 | 3.75 | 5 |

TU30PS-3

Three Phase



| PART NO. | AMP RATIO | BUSBAR (mm) | CABLE (mm ²) | CLASS 0.5 | CLASS 1 | CLASS 3 |
|----------------|-----------|-------------|--------------------------|-----------|---------|---------|
| | | | | VA | VA | VA |
| TU30PS-3-150/5 | 150/5 | 30x10 | 25 | - | 1.5 | - |
| TU30PS-3-200/5 | 200/5 | 30x10 | 25 | - | 2.5 | - |
| TU30PS-3-250/5 | 250/5 | 30x10 | 25 | - | 2.5 | - |
| TU30PS-3-300/5 | 300/5 | 30x10 | 25 | 2.5 | 2.5 | - |
| TU30PS-3-400/5 | 400/5 | 30x10 | 25 | 2.5 | 2.5 | - |
| TU30PS-3-500/5 | 500/5 | 30x10 | 25 | 3.75 | 3.75 | - |
| TU30PS-3-600/5 | 600/5 | 30x10 | 25 | 5 | 5 | - |

Solid Core – High Accuracy

TUC30

Single Phase
High Accuracy



| PART NO. | AMP RATIO | BUSBAR (mm) | CABLE (mm ²) | CLASS 0.5 | CLASS 1 | CLASS 3 |
|-------------|-----------|-------------|--------------------------|-----------|---------|---------|
| | | | | VA | VA | VA |
| TUC30-200/5 | 200/5 | 30x10 | 25 | 15 | 20 | 30 |
| TUC30-250/5 | 250/5 | 30x10 | 25 | 15 | 20 | 30 |
| TUC30-300/5 | 300/5 | 30x10 | 25 | 15 | 20 | 30 |
| TUC30-400/5 | 400/5 | 30x10 | 25 | 15 | 20 | 30 |
| TUC30-500/5 | 500/5 | 30x10 | 25 | 15 | 20 | 30 |
| TUC30-600/5 | 600/5 | 30x10 | 25 | 15 | 20 | 30 |

TUC40

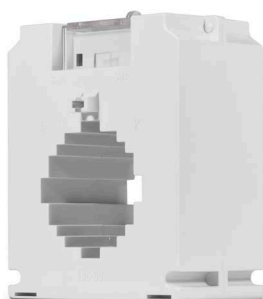
Single Phase
High Accuracy



| PART NO. | AMP RATIO | BUSBAR (mm) | CABLE (mm ²) | CLASS 0.5 | CLASS 1 | CLASS 3 |
|--------------|-----------|-------------|--------------------------|-----------|---------|---------|
| | | | | VA | VA | VA |
| TUC40-50/5 | 50/5 | 40x10 | 32 | - | 0.75 | 1.5 |
| TUC40-60/5 | 60/5 | 40x10 | 32 | - | 1.25 | 2 |
| TUC40-75/5 | 75/5 | 40x10 | 32 | - | 2 | 3.75 |
| TUC40-100/5 | 100/5 | 40x10 | 32 | 1 | 3 | 5 |
| TUC40-125/5 | 125/5 | 40x10 | 32 | 2.5 | 3.75 | 5 |
| TUC40-150/5 | 150/5 | 40x10 | 32 | 3.75 | 5 | 7.5 |
| TUC40-200/5 | 200/5 | 40x10 | 32 | 3.75 | 5 | 7.5 |
| TUC40-250/5 | 250/5 | 40x10 | 32 | 5 | 7.5 | 10 |
| TUC40-300/5 | 300/5 | 40x10 | 32 | 7.5 | 10 | 15 |
| TUC40-400/5 | 400/5 | 40x10 | 32 | 10 | 15 | 20 |
| TUC40-500/5 | 500/5 | 40x10 | 32 | 10 | 15 | 20 |
| TUC40-600/5 | 600/5 | 40x10 | 32 | 10 | 15 | 20 |
| TUC40-750/5 | 750/5 | 40x10 | 32 | 10 | 15 | 20 |
| TUC40-800/5 | 800/5 | 40x10 | 32 | 15 | 20 | 30 |
| TUC40-1000/5 | 1000/5 | 40x10 | 32 | 15 | 20 | 30 |

TUC50

Single Phase
High Accuracy

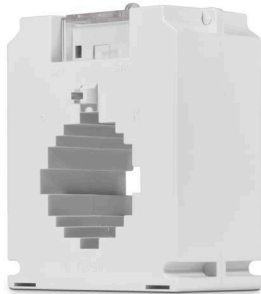


| PART NO. | AMP RATIO | BUSBAR (mm) | CABLE (mm ²) | CLASS 0.5 | CLASS 1 | CLASS 3 |
|--------------|-----------|-------------|--------------------------|-----------|---------|---------|
| | | | | VA | VA | VA |
| TUC50-400/5 | 400/5 | 50x10 | 40 | 10 | - | - |
| TUC50-500/5 | 500/5 | 50x10 | 40 | 10 | - | - |
| TUC50-600/5 | 600/5 | 50x10 | 40 | 10 | - | - |
| TUC50-750/5 | 750/5 | 50x10 | 40 | 10 | - | - |
| TUC50-800/5 | 800/5 | 50x10 | 40 | 10 | - | - |
| TUC50-1000/5 | 1000/5 | 50x10 | 40 | 10 | - | - |
| TUC50-1200/5 | 1200/5 | 50x10 | 40 | 10 | - | - |
| TUC50-1500/5 | 1500/5 | 50x10 | 40 | 10 | - | - |
| TUC50-2000/5 | 2000/5 | 50x10 | 40 | 10 | - | - |

Solid Core - High Accuracy

TUC60

Single Phase
High Accuracy



| PART NO. | AMP RATIO | BUSBAR (mm) | CABLE (mm ²) | CLASS 0.5 | CLASS 1 | CLASS 3 |
|--------------|-----------|-------------|--------------------------|-----------|---------|---------|
| | | | | VA | VA | VA |
| TUC60-400/5 | 400/5 | 60x10 | 51 | 15 | 20 | 30 |
| TUC60-500/5 | 500/5 | 60x10 | 51 | 15 | 20 | 30 |
| TUC60-600/5 | 600/5 | 60x10 | 51 | 15 | 20 | 30 |
| TUC60-750/5 | 750/5 | 60x10 | 51 | 15 | 20 | 30 |
| TUC60-800/5 | 800/5 | 60x10 | 51 | 15 | 20 | 30 |
| TUC60-1000/5 | 1000/5 | 60x10 | 51 | 15 | 20 | 30 |
| TUC60-1200/5 | 1200/5 | 60x10 | 51 | 15 | 20 | 30 |
| TUC60-1500/5 | 1500/5 | 60x10 | 51 | 15 | 20 | 30 |
| TUC60-2000/5 | 2000/5 | 60x10 | 51 | 15 | 20 | 30 |

TUC80

Single Phase
High Accuracy



| PART NO. | AMP RATIO | BUSBAR (mm) | CABLE (mm ²) | CLASS 0.5 | CLASS 1 | CLASS 3 |
|--------------|-----------|-------------|--------------------------|-----------|---------|---------|
| | | | | VA | VA | VA |
| TUC80-400/5 | 400/5 | 80x30 | 65 | 15 | 20 | 30 |
| TUC80-500/5 | 500/5 | 80x30 | 65 | 15 | 20 | 30 |
| TUC80-600/5 | 600/5 | 80x30 | 65 | 15 | 20 | 30 |
| TUC80-750/5 | 750/5 | 80x30 | 65 | 15 | 20 | 30 |
| TUC80-800/5 | 800/5 | 80x30 | 65 | 15 | 20 | 30 |
| TUC80-1000/5 | 1000/5 | 80x30 | 65 | 15 | 20 | 30 |
| TUC80-1200/5 | 1200/5 | 80x30 | 65 | 15 | 20 | 30 |
| TUC80-1500/5 | 1500/5 | 80x30 | 65 | 15 | 20 | 30 |
| TUC80-2000/5 | 2000/5 | 80x30 | 65 | 15 | 20 | 30 |
| TUC80-2500/5 | 2500/5 | 80x30 | 65 | 15 | 20 | 30 |

Split Core

TA30P

Single Phase



| PART NO. | AMP RATIO | BUSBAR (mm) | CABLE (mm ²) | CLASS 0.5 | CLASS 1 | CLASS 3 |
|--------------------|-----------|-------------|--------------------------|-----------|---------|---------|
| | | | | VA | VA | VA |
| TA30P-100/5 | 100/5 | 30x20 | 20 | - | - | 3 |
| TA30P-150/5 | 150/5 | 30x20 | 20 | - | - | 3.75 |
| TA30P-200/5 | 200/5 | 30x20 | 20 | - | 2.5 | 4 |
| TA30P-250/5 | 250/5 | 30x20 | 20 | - | 3.75 | 5 |
| TA30P-300/5 | 300/5 | 30x20 | 20 | 2.5 | 4 | 6 |
| TA30P-400/5 | 400/5 | 30x20 | 20 | 3.75 | 5 | 10 |

TA60P

Single Phase



| PART NO. | AMP RATIO | BUSBAR (mm) | CABLE (mm ²) | CLASS 0.5 | CLASS 1 | CLASS 3 |
|---------------------|-----------|-------------|--------------------------|-----------|---------|---------|
| | | | | VA | VA | VA |
| TA60P-250/5 | 250/5 | 60x30 | 30 | - | 2.5 | 3.75 |
| TA60P-300/5 | 300/5 | 60x30 | 30 | - | 3.75 | 5 |
| TA60P-400/5 | 400/5 | 60x30 | 30 | 2.5 | 3.75 | 7.5 |
| TA60P-500/5 | 500/5 | 60x30 | 30 | 3.75 | 5 | 15 |
| TA60P-600/5 | 600/5 | 60x30 | 30 | 5 | 7.5 | 20 |
| TA60P-750/5 | 750/5 | 60x30 | 30 | 7.5 | 10 | 20 |
| TA60P-800/5 | 800/5 | 60x30 | 30 | 7.5 | 10 | 20 |
| TA60P-1000/5 | 1000/5 | 60x30 | 30 | 10 | 15 | 20 |

TA80P

Single Phase



| PART NO. | AMP RATIO | BUSBAR (mm) | CABLE (mm ²) | CLASS 0.5 | CLASS 1 | CLASS 3 |
|---------------------|-----------|-------------|--------------------------|-----------|---------|---------|
| | | | | VA | VA | VA |
| TA80P-250/5 | 250/5 | 80x50 | 50 | - | 2.5 | 3.75 |
| TA80P-300/5 | 300/5 | 80x50 | 50 | - | 3.75 | 5 |
| TA80P-400/5 | 400/5 | 80x50 | 50 | 2.5 | 3.75 | 7.5 |
| TA80P-500/5 | 500/5 | 80x50 | 50 | 3.75 | 5 | 15 |
| TA80P-600/5 | 600/5 | 80x50 | 50 | 5 | 7.5 | 20 |
| TA80P-750/5 | 750/5 | 80x50 | 50 | 7.5 | 10 | 20 |
| TA80P-800/5 | 800/5 | 80x50 | 50 | 7.5 | 10 | 20 |
| TA80P-1000/5 | 1000/5 | 80x50 | 50 | 10 | 15 | 20 |

Split Core

TA100P

Single Phase



| PART NO. | AMP RATIO | BUSBAR (mm) | CABLE (mm ²) | CLASS 0.5 | CLASS 1 | CLASS 3 |
|---------------|-----------|-------------|--------------------------|-----------|---------|---------|
| | | | | VA | VA | VA |
| TA100P-250/5 | 250/5 | 100x80 | 80 | - | 2.5 | 3.75 |
| TA100P-300/5 | 300/5 | 100x80 | 80 | - | 3.75 | 5 |
| TA100P-400/5 | 400/5 | 100x80 | 80 | 2.5 | 3.75 | 7.5 |
| TA100P-500/5 | 500/5 | 100x80 | 80 | 3.75 | 5 | 15 |
| TA100P-600/5 | 600/5 | 100x80 | 80 | 5 | 7.5 | 20 |
| TA100P-750/5 | 750/5 | 100x80 | 80 | 7.5 | 10 | 20 |
| TA100P-800/5 | 800/5 | 100x80 | 80 | 7.5 | 10 | 20 |
| TA100P-1000/5 | 1000/5 | 100x80 | 80 | 10 | 15 | 20 |
| TA100P-1200/5 | 1200/5 | 100x80 | 80 | 15 | 20 | 30 |
| TA100P-1500/5 | 1500/5 | 100x80 | 80 | 15 | 20 | 30 |
| TA100P-2000/5 | 2000/5 | 100x80 | 80 | 20 | 30 | 45 |

TA125P

Single Phase



| PART NO. | AMP RATIO | BUSBAR (mm) | CABLE (mm ²) | CLASS 0.5 | CLASS 1 | CLASS 3 |
|---------------|-----------|-------------|--------------------------|-----------|---------|---------|
| | | | | VA | VA | VA |
| TA125P-500/5 | 500/5 | 125x80 | 80 | - | 5 | 7.5 |
| TA125P-600/5 | 600/5 | 125x80 | 80 | - | 5 | 15 |
| TA125P-750/5 | 750/5 | 125x80 | 80 | 5 | 10 | 20 |
| TA125P-800/5 | 800/5 | 125x80 | 80 | 7.5 | 10 | 20 |
| TA125P-1000/5 | 1000/5 | 125x80 | 80 | 10 | 20 | 30 |
| TA125P-1200/5 | 1200/5 | 125x80 | 80 | 15 | 20 | 30 |
| TA125P-1500/5 | 1500/5 | 125x80 | 80 | 20 | 30 | 45 |
| TA125P-2000/5 | 2000/5 | 125x80 | 80 | 25 | 30 | 45 |
| TA125P-2500/5 | 2500/5 | 125x80 | 80 | 25 | 30 | 45 |
| TA125P-3000/5 | 3000/5 | 125x80 | 80 | 30 | 45 | 60 |

TA160P

Single Phase



| PART NO. | AMP RATIO | BUSBAR (mm) | CABLE (mm ²) | CLASS 0.5 | CLASS 1 | CLASS 3 |
|---------------|-----------|-------------|--------------------------|-----------|---------|---------|
| | | | | VA | VA | VA |
| TA160P-500/5 | 500/5 | 160x80 | 80 | 2.5 | 3.75 | 7.5 |
| TA160P-600/5 | 600/5 | 160x80 | 80 | 3.75 | 5 | 10 |
| TA160P-750/5 | 750/5 | 160x80 | 80 | 5 | 10 | 20 |
| TA160P-800/5 | 800/5 | 160x80 | 80 | 7.5 | 10 | 20 |
| TA160P-1000/5 | 1000/5 | 160x80 | 80 | 10 | 20 | 30 |
| TA160P-1200/5 | 1200/5 | 160x80 | 80 | 15 | 20 | 30 |
| TA160P-1500/5 | 1500/5 | 160x80 | 80 | 20 | 30 | 45 |
| TA160P-2000/5 | 2000/5 | 160x80 | 80 | 25 | 30 | 45 |
| TA160P-2500/5 | 2500/5 | 160x80 | 80 | 25 | 30 | 45 |
| TA160P-3000/5 | 3000/5 | 160x80 | 80 | 30 | 45 | 60 |
| TA160P-4000/5 | 4000/5 | 160x80 | 80 | 30 | 45 | 60 |
| TA160P-5000/5 | 5000/5 | 160x80 | 80 | 30 | 45 | 60 |

CTs for Littelfuse Protection Relays

EFCT Series



| PART NO. | WINDOW ID (mm) | AMP RATIO | TURNS RATIO | MONITORING | with FLUX CONDITIONER | APPLICATION |
|-------------|----------------|-----------|-------------|-------------------|-----------------------|---|
| EFCT-26 | 26 | 5/0.05 | 100/1 | 3 Phase & Neutral | yes | EL731, FPU-32, FPS, MPU-32, MPS, SE-330, SE-330AU, SE-701, SE-703 |
| EFCT-1 | 82 | 5/0.05 | 100/1 | Neutral | - | |
| EFCT-1C/WFC | 70 | 5/0.05 | 100/1 | 3 Phase | yes | |
| EFCT-2 | 140 | 5/0.05 | 100/1 | 3 Phase | yes | |

Accuracy: 3% @ 0.01VA

EFCT-RF Series



| PART NO. | WINDOW ID (mm) | AMP RATIO | TURNS RATIO | ACCESSORY REQUIRED | APPLICATION |
|-----------|----------------|-----------|-------------|--------------------|---------------|
| EFCT-5RF | 60 | 100/1 | 100/1 | SE-EFVC | EL731, SE-703 |
| EFCT-6RF | 85 | 100/1 | 100/1 | | |
| EFCT-7RF | 112 | 100/1 | 100/1 | | |
| EFCT-8RF | 140 | 100/1 | 100/1 | | |
| EFCT-9RF | 160 | 100/1 | 100/1 | | |
| EFCT-10RF | 200 | 100/1 | 100/1 | | |

Accessory required: Voltage Clamp

| PART NO. | REQUIRED WITH | APPLICATION |
|----------|---------------|---------------|
| SE-EFVC | EFCT-RF CTs | EL731, SE-703 |

CT200 Series



| PART NO. | WINDOW ID (mm) | AMP RATIO | TURNS RATIO | APPLICATION |
|----------|----------------|-----------|-------------|------------------------|
| CT200 | 56 | 200/5 | 40/1 | SE-105, SE-107, SE-325 |
| CT200L | 89 | 200/5 | 40/1 | |

Accuracy: +/-3% @ rated current,
+/-10% @ 10x rated current: 3% @ 0.01VA

SE-CS10 Series



| PART NO. | WINDOW ID (mm) | AMP RATIO | TURNS RATIO | APPLICATION |
|-------------|----------------|-------------|-------------|-------------------------|
| SE-CS10-2.5 | 63 | 12.5/0.0625 | 200/1 | SE-134C, SE-135, SE-145 |
| SE-CS10-4 | 108 | 12.5/0.0625 | 200/1 | |
| SE-CS10-6 | 160 | 12.5/0.0625 | 200/1 | |
| SE-CS10-8 | 209 | 12.5/0.0625 | 200/1 | |

Accuracy: 1%

CTs for Littelfuse Protection Relays

SE-CS30 Series



| PART NO. | WINDOW ID (mm) | AMP RATIO | TURNS RATIO | APPLICATION |
|------------|----------------|-----------|-------------|--|
| SE-CS30-26 | 26 | 30/0.05 | 600/1 | FPU-32, FPS, MPU-32, MPS, PGR-6100, SE-704, SE-330AU |
| SE-CS30-4 | 95 | 30/0.05 | 600/1 | |
| SE-CS30-5 | 130 | 30/0.05 | 600/1 | |
| SE-CS30-70 | 70 | 30/0.05 | 600/1 | |
| SE-CS30-8 | 200 | 30/0.05 | 600/1 | |

Accuracy: 3% @ 0.06VA

SE-CS40 Series



| PART NO. | WINDOW ID (mm) | AMP RATIO | TURNS RATIO | APPLICATION |
|-----------|----------------|-----------|-------------|----------------|
| SE-CS40-6 | 160 | 50/0.0625 | 800/1 | SE-135, SE-145 |

Accuracy: 3% @ 0.04VA

MPU Series



| PART NO. | WINDOW ID (mm) | AMP RATIO | CLASS | APPLICATION |
|----------------|----------------|-----------|-----------|----------------|
| MPU/32-100/1 | 32 | 100/1 | 5P10, 1VA | MPU-32, FPU-32 |
| MPU/32-150/1 | 32 | 150/1 | 5P10, 1VA | |
| MPU/32-200/1 | 32 | 200/1 | 5P10, 1VA | |
| MPU/32-250/1 | 32 | 250/1 | 5P10, 1VA | |
| MPU/32-300/1 | 32 | 300/1 | 5P10, 1VA | |
| MPU/45-100/1 | 45 | 100/1 | 5P10, 1VA | |
| MPU/45-200/1 | 45 | 200/1 | 5P10, 1VA | |
| MPU/45-300/1 | 45 | 300/1 | 5P10, 1VA | |
| MPU/45-400/1 | 45 | 400/1 | 5P10, 1VA | |
| MPU/45-500/1 | 45 | 500/1 | 5P10, 1VA | |
| MPU/60-1000/1 | 60 | 1000/1 | 5P10, 1VA | |
| MPU/60-400/1 | 60 | 400/1 | 5P10, 1VA | |
| MPU/60-500/1 | 60 | 500/1 | 5P10, 1VA | |
| MPU/60-600/1 | 60 | 600/1 | 5P10, 1VA | |
| MPU/60-800/1 | 60 | 800/1 | 5P10, 1VA | |
| MPU/85-1000/1 | 85 | 1000/1 | 5P10, 1VA | |
| MPU/85-1200/1 | 85 | 1200/1 | 5P10, 1VA | |
| MPU/85-1600/1 | 85 | 1600/1 | 5P10, 1VA | |
| MPU/112-1000/1 | 112 | 1000/1 | 5P10, 1VA | |
| MPU/112-1200/1 | 112 | 1200/1 | 5P10, 1VA | |
| MPU/112-1600/1 | 112 | 1600/1 | 5P10, 1VA | |

CTs for Littelfuse Protection Relays

DMC/5 Series



| PART NO. | WINDOW ID (mm) | AMP RATIO | AXIAL THICKNESS (mm) | CLASS | APPLICATION |
|-------------------|----------------|-----------|----------------------|-----------|-------------|
| DMC45-150/5 | 45 | 150/5 | 60 | 5P10, 2VA | PGR-8800 |
| DMC45-200/5 | 45 | 200/5 | 60 | 5P10, 2VA | |
| DMC45-300/5 | 45 | 300/5 | 60 | 5P10, 2VA | |
| DMC45-400/5 | 45 | 400/5 | 60 | 5P10, 2VA | |
| DMC45-500/5 | 45 | 500/5 | 30 | 5P10, 2VA | |
| DMC45-600/5 | 45 | 600/5 | 30 | 5P10, 2VA | |
| DMC60-400/5 | 60 | 400/5 | 30 | 5P10, 2VA | |
| DMC60-500/5 | 60 | 500/5 | 30 | 5P10, 2VA | |
| DMC60-600/5 | 60 | 600/5 | 30 | 5P10, 2VA | |
| DMC60-800/5 | 60 | 800/5 | 30 | 5P10, 2VA | |
| DMC85-500/5 | 85 | 500/5 | 30 | 5P10, 2VA | |
| DMC85-600/5 | 85 | 600/5 | 30 | 5P10, 2VA | |
| DMC85-800/5 | 85 | 800/5 | 30 | 5P10, 2VA | |
| DMC85-1000/5 | 85 | 1000/5 | 30 | 5P10, 2VA | |
| DMC85-1200/5 | 85 | 1200/5 | 30 | 5P10, 2VA | |
| DMC85-1500/5 | 85 | 1500/5 | 30 | 5P10, 2VA | |
| DMC112/170-800/5 | 112/170 | 800/5 | 60 | 5P10, 2VA | |
| DMC112/170-1000/5 | 112/170 | 1000/5 | 60 | 5P10, 2VA | |
| DMC112/170-1200/5 | 112/170 | 1200/5 | 60 | 5P10, 2VA | |
| DMC112/170-1500/5 | 112/170 | 1500/5 | 60 | 5P10, 2VA | |

DMC/1 Series



| PART NO. | WINDOW ID (mm) | AMP RATIO | AXIAL THICKNESS (mm) | CLASS | APPLICATION |
|-------------------|----------------|-----------|----------------------|-----------|-------------|
| DMC45-150/1 | 45 | 150/1 | 60 | 5P10, 2VA | SE-330 |
| DMC45-200/1 | 45 | 200/1 | 60 | 5P10, 2VA | |
| DMC45-300/1 | 45 | 300/1 | 60 | 5P10, 2VA | |
| DMC45-400/1 | 45 | 400/1 | 60 | 5P10, 2VA | |
| DMC45-500/1 | 45 | 500/1 | 30 | 5P10, 2VA | |
| DMC45-600/1 | 45 | 600/1 | 30 | 5P10, 2VA | |
| DMC60-200/1 | 60 | 200/1 | 30 | 5P10, 2VA | |
| DMC60-300/1 | 60 | 300/1 | 30 | 5P10, 2VA | |
| DMC60-400/1 | 60 | 400/1 | 30 | 5P10, 2VA | |
| DMC60-500/1 | 60 | 500/1 | 30 | 5P10, 2VA | |
| DMC60-600/1 | 60 | 600/1 | 30 | 5P10, 2VA | |
| DMC60-800/1 | 60 | 800/1 | 30 | 5P10, 2VA | |
| DMC85-500/1 | 85 | 500/1 | 30 | 5P10, 2VA | |
| DMC85-600/1 | 85 | 600/1 | 30 | 5P10, 2VA | |
| DMC85-700/1 | 85 | 700/1 | 30 | 5P10, 2VA | |
| DMC85-800/1 | 85 | 800/1 | 30 | 5P10, 2VA | |
| DMC85-900/1 | 85 | 900/1 | 30 | 5P10, 2VA | |
| DMC85-1000/1 | 85 | 1000/1 | 30 | 5P10, 2VA | |
| DMC85-1200/1 | 85 | 1200/1 | 30 | 5P10, 2VA | |
| DMC85-1500/1 | 85 | 1500/1 | 30 | 5P10, 2VA | |
| DMC112/170-800/1 | 112/170 | 800/1 | 60 | 5P10, 2VA | |
| DMC112/170-1000/1 | 112/170 | 1000/1 | 60 | 5P10, 2VA | |
| DMC112/170-1200/1 | 112/170 | 1200/1 | 60 | 5P10, 2VA | |
| DMC112/170-1500/1 | 112/170 | 1500/1 | 60 | 5P10, 2VA | |