

# TEST EQUIPMENT

*Bringing you the  
World's Best Brands*

## Test Equipment

<b>Power Supplies</b>	<b>188</b>
<b>Test Equipment</b>	<b>188</b>
<b>EMC</b>	<b>189</b>
<b>Anechoic Chamber</b>	<b>189</b>
<b>Microwave/mmWave</b>	<b>190</b>
<b>Opto-Electronic</b>	<b>190</b>

## Power Supplies

- Benchtop Power Supplies
- DC Programmable Power Supplies
- AC Programmable Power Supplies
- DC Loads
- AC Loads



**ELGAR™**

**Sorensen™**

**California™  
Instruments**

**AMREL™**

**AMETEK®**  
PROGRAMMABLE POWER

## Test Equipment

- Vector Network Analysers
- Radio Communication Testers
- Power Quality Analysers
- Spectrum Analysers
- Function Generators
- Spectrum Analysers
- Oscilloscopes
- LCR Meters
- Hi-Pot Testers
- Battery Testers
- Multimeters

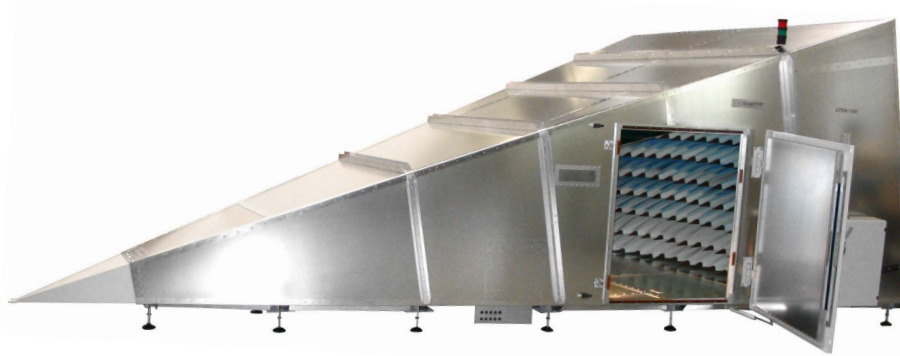


**GW INSTEK**

**GAUSS INSTRUMENTS**

## EMC

- ESD Simulator Gun
- RF Immunity Test Systems
- Automotive Test Systems
- EMI Receivers
- GTEM Cells
- RF Power Amplifiers
- Solid State Amplifiers
- TWT Amplifiers
- CDN
- LISN
- ISN
- Antennas
- RC Chamber
- Surge Burst EFT Test Systems

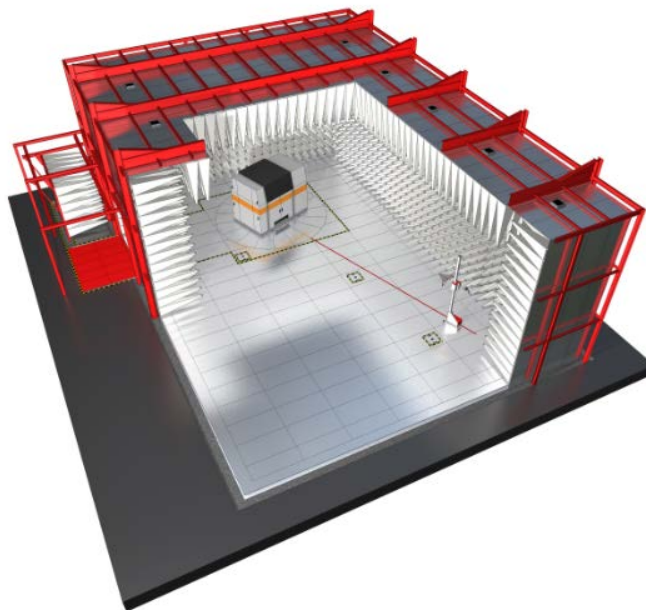


RF/Microwave Amplifiers



## Anechoic Chamber

- Radiated Emission
- Radiated Immunity
- Conducted Immunity



FRANKONIA

## Microwave/mmWave

- Microwave/mmWave
- Signal Generators
- Signal/Spectrum Analysers
- Network Analysers
- Noise Figure Analysers
- Microwave Power Meters
- RF and Microwave Multifunctional Analysers
- Power Amplifiers
- Antenna Testing Systems
- RCS Testing Systems



**Ce/year**

## Opto-Electronic

- Optical Fiber Fusion Splicers
- OTDR's
- Optical Sources
- Optical Power Meters
- Optical Attenuators



**Ce/year**